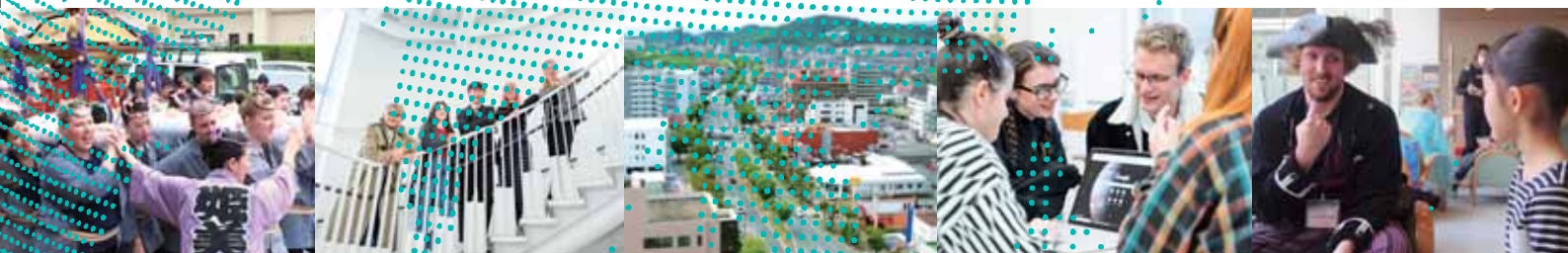


The Third Higashihiroshima City Internationalization Promotion Plan

Summary Version

**A multicultural city,
building the future
with links to the world**



July 2020

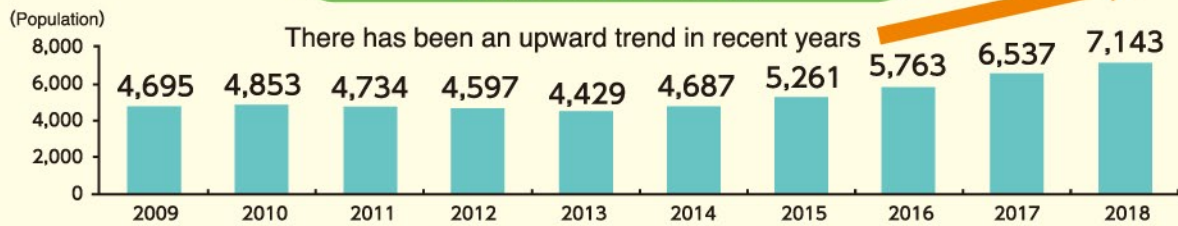
Higashihiroshima City

Introduction

Higashihiroshima City has been making efforts to work towards the achievement of a multicultural society, in which all citizens, including non-Japanese staying and living in the city, can live their lives without worries. Since 2013, when the Second Higashihiroshima City Internationalization Promotion Plan (hereafter, 'the second plan') was adopted, the city has been taking a range of steps in the pursuit of this aim.

Since the adoption of the second plan, the number of non-Japanese staying and living in the city has increased greatly, and the nationalities and statuses of residence have become more varied. As such, it is becoming increasingly necessary not just to respond to the current situation in terms of city planning, but also to take steps to make use of this diversity as a source of energy and vitality for the city. With this in mind, Higashihiroshima City has drawn up and adopted the Third Higashihiroshima City Internationalization Promotion Plan (hereafter, 'the plan'), aiming for the realization of an international and multicultural society.

Changes in numbers of non-Japanese citizens of Higashihiroshima City



Source: Basic Resident Register (as of the end of December each year)

Nationalities: Comparison with national and prefectural statistics

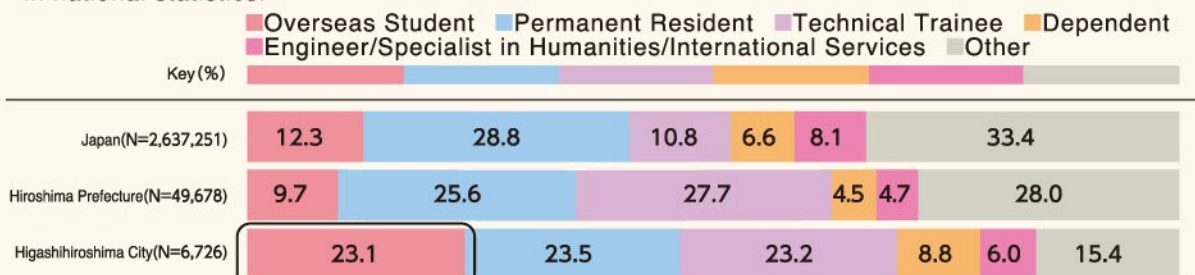
Compared to the statistics for nationalities in national and prefectural data, in Higashihiroshima City the proportion of those with Chinese nationality is almost half, a much greater percentage than in national or prefectural statistics. In addition, the figures for those with South Korean and Philippine nationality in Higashihiroshima City are also significantly lower than the figures in national and prefectural statistics.



Source: National and prefectural figures: 'Foreign Resident Statistics' (Ministry of Justice), City figures: Basic Resident Register (as of the end of June 2018)

Statuses of residence: Comparison with national and prefectural statistics

Compared to the statistics for statuses of residence in national and prefectural data, in Higashihiroshima City the proportion of those with 'overseas student' status is more than 20%, a much greater percentage than in national or prefectural statistics. In addition, the figures for 'technical trainee' status are also more than 20%, a significantly higher percentage than the figure in national statistics.



Source: National and prefectural figures: 'Foreign Resident Statistics' (Ministry of Justice), City figures: Basic Resident Register (as of the end of June 2018)

Summary of the Plan

① Positioning and Role of the Plan

- This plan is one of the category-specific plans of the 'Higashihiroshima City Comprehensive Plan', which sets out the fundamentals of city planning in Higashihiroshima City. It is positioned as an implementation plan whose purpose is to bring to fruition measures regarding internationalization, and it has been drawn up with regard to consistency with the policies of the national and prefectural governments, and with the details of other plans related to Higashihiroshima City.
- This plan also functions as a concrete plan of action aimed at the realization of an 'international, multicultural society', in which, irrespective of differences in language and culture, each and every citizen can live their lives without worries, can accept each other, and can make the most of their individual characters and abilities.

② Period of the Plan

- The period of this plan runs for five years, from 2020 to 2024. Even during this period, there may be revisions to the plan in the case of changing social conditions or revisions to plans at a higher level, etc. Further, in the final financial year of the plan, the content will be evaluated, with consideration of results and issues, and this will be linked to the plan for the following period.

③ Formulation of the Plan

- A questionnaire was conducted among Japanese and non-Japanese citizens, and interviews (hearings) with a range of groups with close links to non-Japanese citizens were held. The results of these were used as reference when drawing up the plan. Further, a series of meetings in which citizens were able to offer and exchange opinions were held, which brought forth a wide range of opinions and ideas.
- The 'Deliberative Commission for the Higashihiroshima City Internationalization Promotion Plan', comprised of those with relevant knowledge and experience, representatives of groups and organizations, etc., was involved in consultations regarding the plan, providing valuable opinions from a range of specialist perspectives.



Overall Concepts of the Plan

1 Overriding Principle

- In Higashihiroshima City, there are people from across the world, with a wide range of linguistic and cultural backgrounds.

The fact that people from many different countries have chosen Higashihiroshima City, and that the appeal of the city is spreading across the globe because of the people who have spent time living here, means that Higashihiroshima City has links to the world. The diversity brought about by these links to the world will lead to the creation of new values and a sustainable future.

With the aim of achieving city planning where such a diverse range of people can live without worries, understand and empathize with each other, and play active roles as citizens, each making the most of their individual personalities and abilities, the plan's overriding principle is summed up as 'A multicultural city, building the future with links to the world'.

Overriding Principle of the Plan

**A multicultural city,
building the future
with links to the world**

2 Basic Targets

- With regard to the present circumstances and issues in Higashihiroshima City, three 'Basic Targets' have been set, each with a 'Direction of Policy'. In addition, a number of 'Shared Foundations' have also been defined, to provide support in terms of the attainment of the Basic Targets.

Basic Target 1

A multicultural city in which anyone can live comfortably and without worries

In Higashihiroshima City, non-Japanese residents from over 90 countries and regions, with many and varied languages and cultures, etc., live as citizens. The plan aims to work towards city planning in order to achieve a city in which each citizen can live a contented, spiritually rich life, in which distinctions between Japanese and non-Japanese citizens do not exist, and in which each citizen can make use of his or her individuality and talents, playing an active part with others as members of a community.



1 Improving the living environment for non-Japanese citizens

2 Creating an environment in which non-Japanese citizens can also play an active part

3 Creating structures for multiculturalism

Basic Target 2

A city that develops and fosters views which will shape the future, by means of international exchange and understanding

The plan aims to work towards not just the promotion of mutual understanding by means of international exchange, but additionally towards the cultivation of new values (culture and ideas different from those that have existed thus far), and of individuals who can bring forth these ideas.

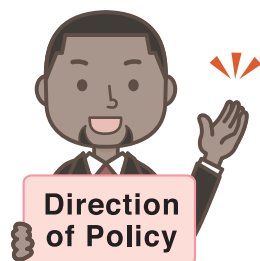


- 1 Promotion of international exchange
- 2 Promotion of international understanding

Basic Target 3

A city with links to the world, vital and energetic through the diversity of its citizens

The plan aims to work towards a city in which the diversity that comes from people with differing languages and cultures, etc., living in the same community is viewed not just from the perspective of the provision of support for non-Japanese residents, but also as a valuable resource, which can become a source of vitality that improves the attractiveness of the city both culturally and economically.



- 1 Improvements to the city environment, with the aim of furthering internationalization
- 2 Supporting the effects of a wide range of individuals, and making use of the resources of the community

Shared Foundations

Development of a system of promotion of internationalization, etc., in which various groups and individuals can participate

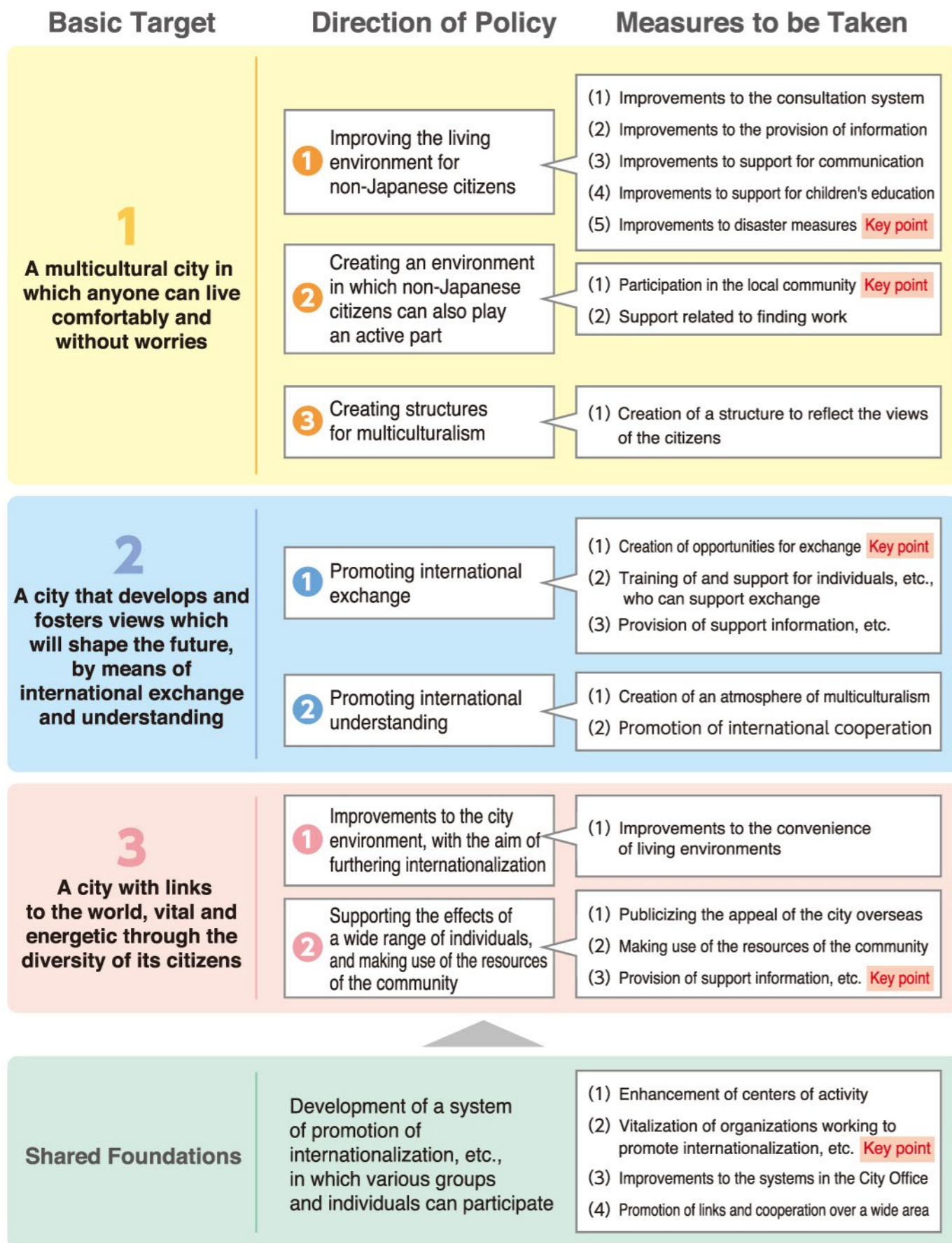
By means of bringing various groups and individuals together, such as local residents, non-Japanese citizens, exchange groups, support groups and local government, activities to create networks and to strengthen centers of exchange will be undertaken. Alongside this, measures will be taken to vitalize the organizations promoting internationalization, etc., and to deepen the links between such organizations, to promote city planning for a multicultural city, and with the aim of achieving growth into an international city. Furthermore, in the City Office, improvements to the service environment for non-Japanese citizens will be promoted, for example by the use of those with specialist expertise, the raising of staff awareness, increased use of multiple languages in information given out in response to enquiries, etc. Alongside this, links and cooperation over a wide area, with neighboring towns and cities as well as with relevant groups, will also be advanced.



- 1 Enhancement of centers of activity
- 2 Vitalization of organizations working to promote internationalization, etc.
- 3 Improvements to the systems in the City Office
- 4 Promotion of links and cooperation over a wide area

Measures to Be Taken by Higashihiroshima City

Overriding principle: A multicultural city, building the future with links to the world



Key Measures



1-1-(5) Improvements to Disaster Measures **Key Point**

Key point 1 Improvement of the system in place to deal with disasters

- The system to deal with a range of languages and a range of cultures in terms of the management of evacuation centers and the provision of information will be improved, in order that appropriate support can be provided in the case of a disaster. Additionally, the system of support in terms of links with local community organizations of self-government, etc., will be enhanced.
- In order to secure volunteers for translation and interpreting, training will be conducted in the city, and a system of support for the wider area will be implemented.

1-2-(1) Participation in the Local Community **Key Point**

Key point 2 Identification and establishment of 'key people'

- In order to promote the active and positive participation of non-Japanese citizens in community activities, etc., 'key people' will be identified and established. These key people will serve to link Japanese and non-Japanese residents in the community, and the community itself, through events, etc.
- Centered around these 'key people', networks of those from the same countries can be identified, and links strengthened.

Key point 3 Promotion of participation in community activities

- In order to increase awareness of local community organizations of self-government, and to promote the active participation of non-Japanese citizens in community activities, etc., efforts will be made to increase understanding of the existence and the role of local community organizations of self-government, which will lead to enrollment and participation.
- Education and training will be held for local community organizations of self-government, to promote the smooth acceptance of non-Japanese who enroll and participate.

2-1-(1) Creation of Opportunities for Exchange **Key Point**

Key point 4 Creation of opportunities for exchange by a varied range of groups and organizations, etc.

- In order to create opportunities for citizens to meet and interact with each other without regard to differences in language or culture, there will be support for activities held by a wide and varied range of groups, and there will be promotion of events in which even those who have never previously been interested feel easily able to participate.
- The holding of events appropriate to an international city will be promoted, taking advantage of links and cooperation between various exchange groups, individuals, etc.

Key point 5 Construction of a network to improve the vitality of exchange

- With the aim of improving the vitality of exchange activities, opportunities for groups and individuals, Japanese and non-Japanese alike, who wish to engage in exchange to gather together and find appropriate matches, and opportunities for groups to share information, will be created, leading to an improved network between groups, etc., and to the creation and enhancement of a system of mutual cooperation.

3-2-(3) Support for the Activities of a Wide Range of Individuals, etc. **Key Point**

Key point 6 Situational improvements, aiming for the creation of an international center for research

- Aiming for the positioning of Higashihiroshima City as an international center of research, improvements will be made to the foundations which allow researchers and foreign students to gather in the city, and measures which aim to create innovation and promote internationalization will be supported.

Shared Foundations (2) Vitalization of Organizations Promoting Internationalization, etc. **Key Point**

Key point 7 Creation of links between international exchange organizations and exchange groups

- In order to vitalize the activities of the Higashihiroshima Council for the Promotion of Internationalization (the central international exchange organization in the city) and other international exchange groups, opportunities for international exchange groups, etc., to meet will be created, and a system by which information can be exchanged will be instituted, thus promoting opportunities for greater numbers of groups to be involved with each other, and join together and cooperate to hold events.

Numerical Targets for the Plan

Basic Target	Content	Current proportion (2019 financial year)	Target proportion (2024 financial year)
1 A multicultural city in which anyone can live comfortably and without worries	Proportion of citizens answering 'Necessary' or 'Necessary to an extent' to the question of whether multicultural city planning is necessary.	83.3%*1	86%
	Proportion of non-Japanese citizens choosing the following answers to the question 'How easy do you feel it is to live in Higashihiroshima City?': 'Very easy' or 'If I had to choose, easy'.	81.3%*2	85%
	Proportion of non-Japanese citizens choosing the following answer to the question 'What sort of relations do you have with the Japanese people in your neighborhood or local community?': 'I hardly have any acquaintances'.	32.2%*2	25%
2 A city that develops and fosters views which will shape the future, by means of international exchange and understanding	Proportion of citizens regarding the fact that there are large numbers of non-Japanese living in Higashihiroshima City as 'a good opportunity to find out about foreign languages, cultures or customs'.	36.9%*1	42%
	Proportion of non-Japanese citizens choosing the following answer to the question 'Do you take part in any local activities?': 'I have never participated'.	24.4%*2	15%
3 A city with links to the world, vital and energetic through the diversity of its citizens	Proportion of non-Japanese citizens choosing the following answers to the question 'How satisfied are you with your daily life in Higashihiroshima City at present?': 'Very satisfied' or 'Satisfied'.	84.7%*2	90%
	Proportion of non-Japanese citizens choosing the following answers to the question 'Would you like to continue living in Higashihiroshima?': 'I would like to continue living here', 'I would like to continue living here, but I am scheduled to move to another area or return to my home country', 'If I had to choose, I would like to continue living here'.	80.1%*2	83%

*1 'Higashihiroshima City Citizen's Satisfaction Survey' (2018)

*2 'Higashihiroshima City Questionnaire for Non-Japanese Residents Regarding Internationalization' (2019)

Promotion of the Plan

1 Improvements to the system of promotion in the City Office



Relevant departments within the structure of the City Office will cooperate fully to promote various initiatives, and provide support tailored to the needs of non-Japanese citizens.

2 Participation by, and links and cooperation between, various organizations, groups and individuals

A range of groups and organizations, such as local communities, universities, businesses, etc., will create and develop links and cooperative relationships, working to promote understanding of internationalization amongst citizens and relevant groups, etc., and identifying and training those who can provide support in local communities and who can work to support exchange.



3 Management of progress of plans



Regular checks and evaluations will be conducted in the City Office, and alongside these, inspections of the status of implementation of the measures for internationalization will be conducted by the Deliberative Commission for the Higashihiroshima City Internationalization Promotion Plan. The results of these inspections and evaluations will be reflected in future measures and initiatives.

The Third Higashihiroshima City Internationalization Promotion Plan (Summary Version)

Date of Issue July 2020 Issued by Higashihiroshima City

Editing Policy Promotion Bureau, Policy and Planning Department, Higashihiroshima City

〒739-8601 8-29 Saijo Sakae-machi, Higashihiroshima City, Hiroshima Prefecture

Tel: 082-420-0917 Fax: 082-420-0402

