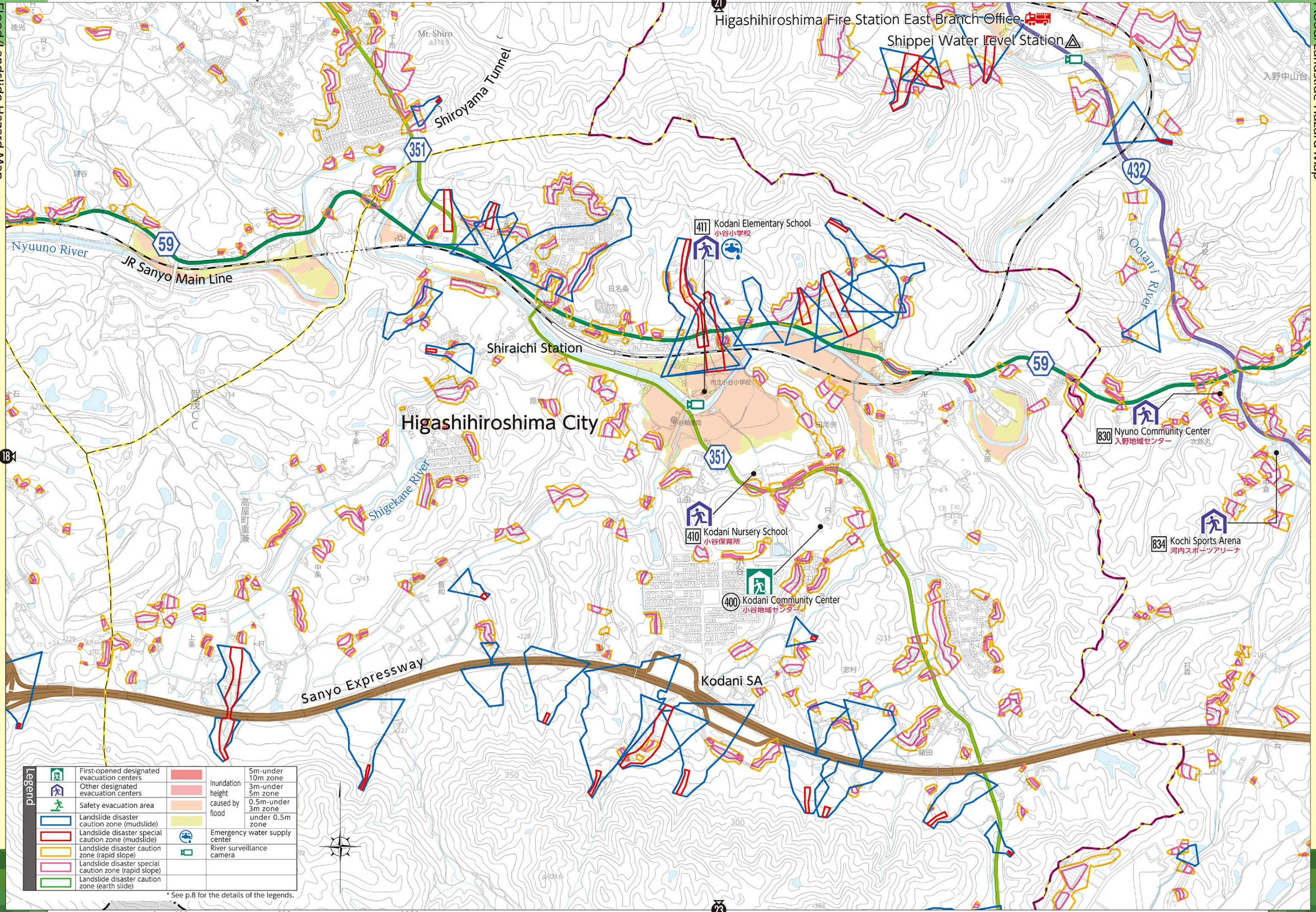


21 Higashihiroshima Fire Station East Branch Office  
 Shippei Water Level Station



Legend		First-opened designated evacuation centers		Inundation height 5m-under 10m zone
		Other designated evacuation centers		Inundation height 3m-under 5m zone
		Safety evacuation area		Inundation height 0.5m-under 3m zone
		Landslide disaster caution zone (mudslide)		Emergency water supply center
		Landslide disaster special caution zone (mudslide)		River surveillance camera
		Landslide disaster caution zone (rapid slope)		
		Landslide disaster special caution zone (rapid slope)		
		Landslide disaster caution zone (earth slide)		

\* See p.8 for the details of the legends.