

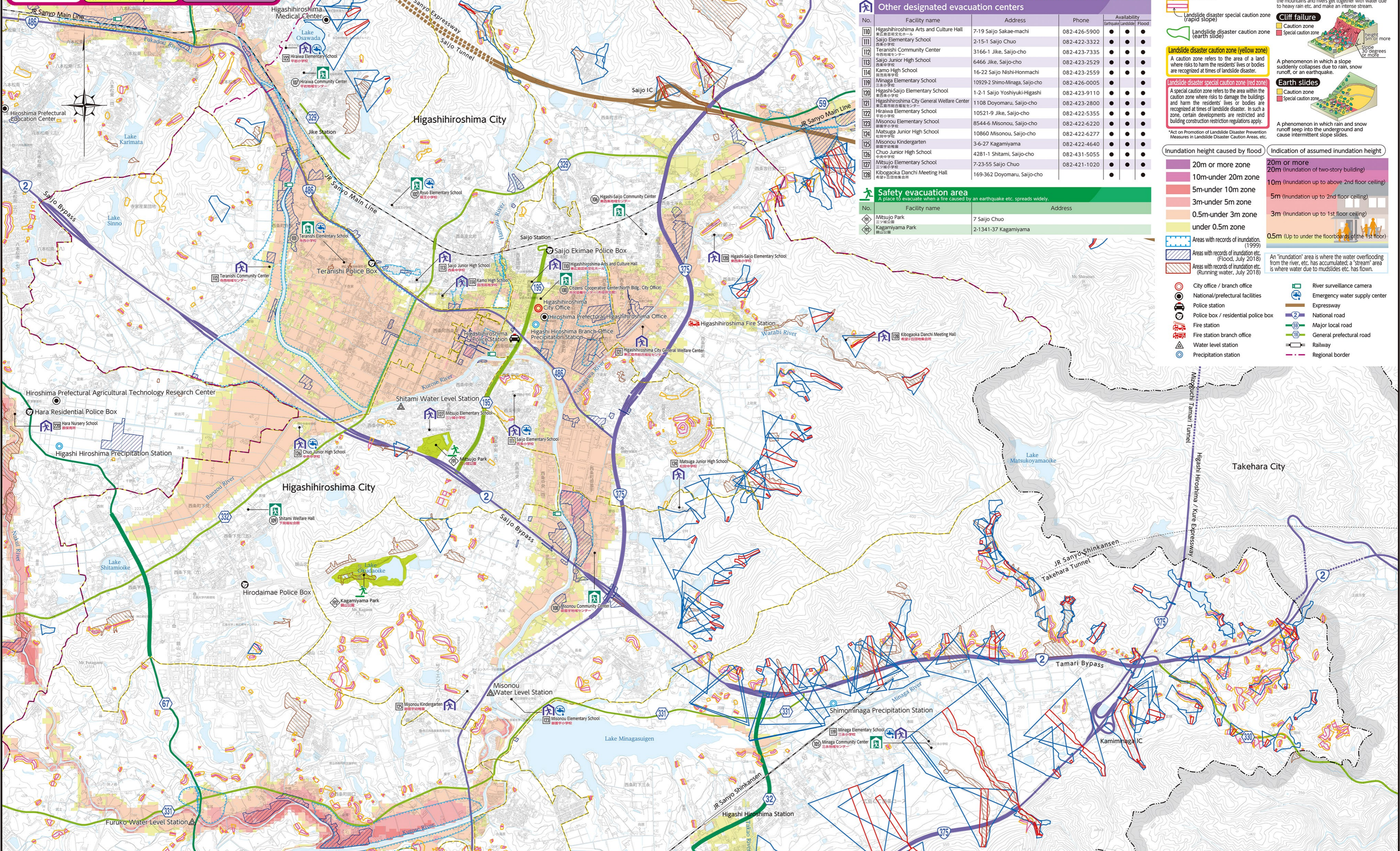
Higashiroshima City Hazard Map(Small and medium-sized rivers)

[Northern area of Saijo]

Scale: 1:20,000

Following are the differences between the May 2021 hazard map and this one:

Assumptions for flooding	This time	May 2021
Rivers with inundation-assumed zones	Heavy rain about once every 1,000 years	Heavy rain about once every 100 years
Past disaster records	Rivers above certain size	Storm rainfall of June 29, 1999, Storm rainfall of July 2018
		(not listed here)



First-opened designated evacuation center in each area

Evacuation Center that open first in each area when the evacuation information is issued.

No.	Facility name	Address	Phone	Availability
100	Citizens Cooperative Center(North Bldg., City Office)	8-29 Saijo Sakae-machi	082-426-4560	● ● ● ● ●
101	Teranishi Elementary School	6664-1 Jike, Saijo-cho	082-423-2632	● ● ● ● ●
102	Ryuo Elementary School	5415-6 Jike, Saijo-cho	082-493-6003	● ● ● ● ●
105	Minaga Community Center	10927-2 Shimo-Minaga, Saijo-cho	082-426-0741	● ● ● ● ●
106	Hiraiwa Community Center	2-3-4 Saijo Doyomaru	082-421-2023	● ● ● ● ●
107	Hiraiwa Community Center	10520-12 Jike, Saijo-cho	082-422-4930	● ● ● ● ●
108	Misonou Community Center	7200 Misonou, Saijo-cho	082-423-3871	● ● ● ● ●
109	Shitamizaki Welfare Hall	5-4-8 Saijo Shitami	082-423-9303	● ● ● ● ●

*Using the upper floors of the school building at times of inundation

Other designated evacuation centers

No.	Facility name	Address	Phone	Availability
110	Higashiroshima Arts and Culture Hall	7-19 Saijo Sakae-machi	082-426-5900	● ● ● ● ●
111	Saijo Elementary School	2-15-1 Saijo Chuo	082-422-3322	● ● ● ● ●
112	Teranishi Community Center	3166-1 Jike, Saijo-cho	082-423-7335	● ● ● ● ●
113	Saijo Junior High School	6466 Jike, Saijo-cho	082-423-2529	● ● ● ● ●
114	Kamo High School	16-22 Saijo Nishi-Honmachi	082-423-2559	● ● ● ● ●
119	Minaga Elementary School	10929-2 Shimo-Minaga, Saijo-cho	082-426-0005	● ● ● ● ●
120	Higashi-Saijo Elementary School	1-2-1 Saijo Yoshiyuki-Higashi	082-423-9110	● ● ● ● ●
121	Higashiroshima City General Welfare Center	1108 Doyomaru, Saijo-cho	082-423-2800	● ● ● ● ●
122	Hiraiwa Elementary School	10521-9 Jike, Saijo-cho	082-422-5355	● ● ● ● ●
123	Misonou Elementary School	8544-6 Misonou, Saijo-cho	082-422-6220	● ● ● ● ●
124	Matsuga Junior High School	10860 Misonou, Saijo-cho	082-422-6277	● ● ● ● ●
125	Misonou Kindergarten	3-6-27 Kagamiyama	082-422-4640	● ● ● ● ●
126	Chuo Junior High School	4281-1 Shitami, Saijo-cho	082-431-5055	● ● ● ● ●
127	Mitsugo Elementary School	7-23-55 Saijo Chuo	082-421-1020	● ● ● ● ●
128	Kibogaoka Danchi Meeting Hall	169-362 Doyomaru, Saijo-cho		● ● ● ● ●

Safety evacuation area

A place to evacuate when a fire caused by an earthquake etc. spreads widely.

No.	Facility name	Address
129	Mitsugo Park	7 Saijo Chuo
130	Kagamiyama Park	2-1341-37 Kagamiyama

Map legend

- First-opened designated evacuation centers
- Other designated evacuation centers
- Safety evacuation area
- Landslide disaster caution zone (mudslide)
- Landslide disaster special caution zone (mudslide)
- Landslide disaster caution zone (rapid slope)
- Landslide disaster special caution zone (rapid slope)
- Landslide disaster caution zone (earth slide)
- Landslide disaster special caution zone (earth slide)
- Landslide disaster caution zone (yellow zone)
- Landslide disaster special caution zone (red zone)
- Inundation height caused by flood
- Indication of assumed inundation height
- Areas with records of inundation
- Areas with records of inundation etc. (Flood, July 2018)
- Areas with records of inundation etc. (Running water, July 2018)
- City office / branch office
- National/prefectural facilities
- Police station
- Police box / residential police box
- Fire station
- Fire station branch office
- Water level station
- Precipitation station
- River surveillance camera
- Emergency water supply center
- Expressway
- National road
- Major local road
- General prefectural road
- Railway
- Regional border