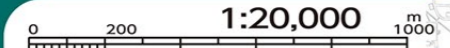


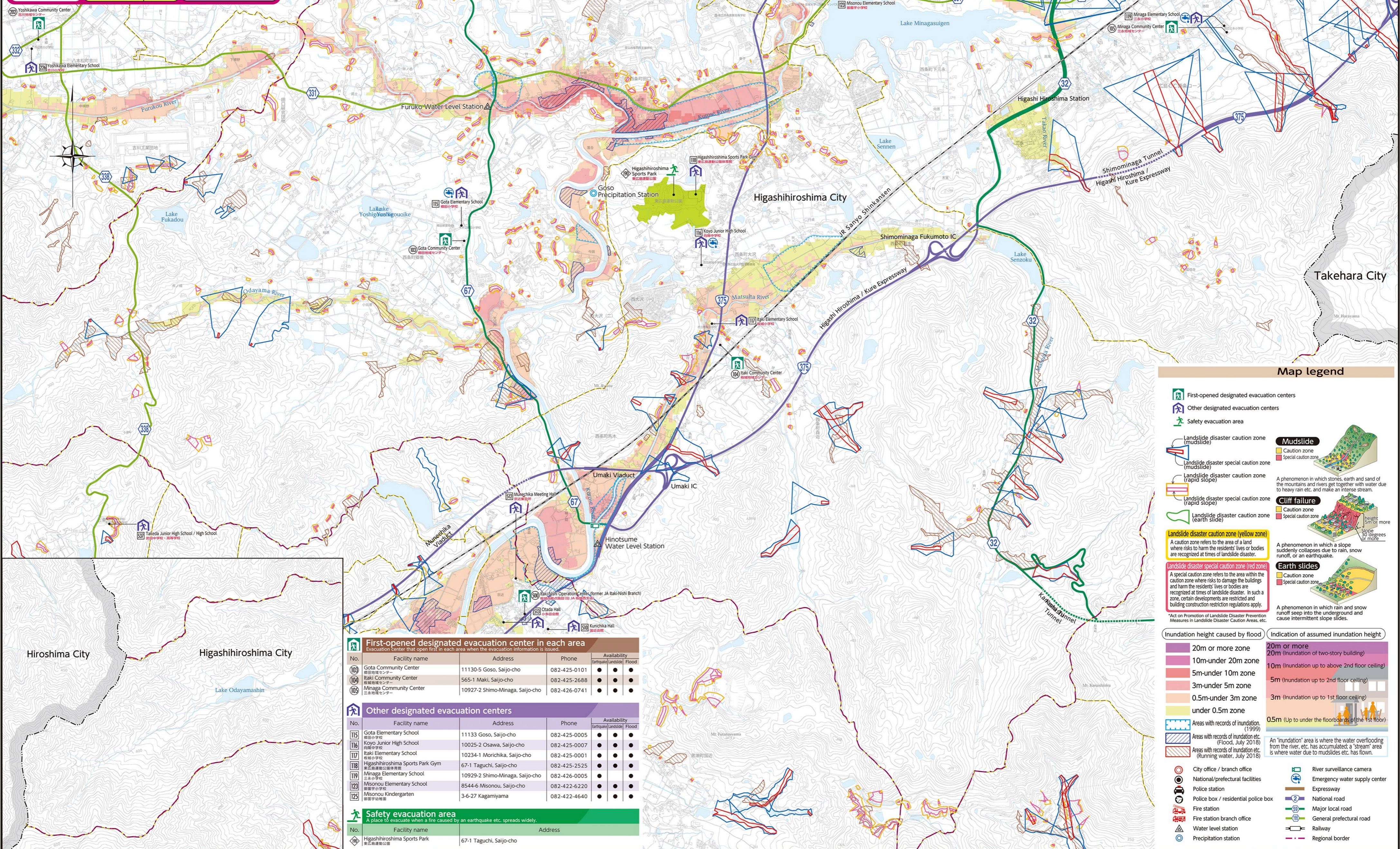
Higashiroshima City Hazard Map(Small and medium-sized rivers)

[Southern area of Saijo]



Following are the differences between the May 2021 hazard map and this one:

	This time	May 2021
Assumptions for flooding	Heavy rain about once every 1,000 years	Heavy rain about once every 100 years
Rivers with inundation-assumed zones	Rivers above certain size	Kurose River, Nuta River, Nyuno River, Mitsuokawa River, part of Nukunashi River
Past disaster records	Storm rainfall of June 29, 1999, Storm rainfall of July 2018	(not listed here)



Map legend

- First-opened designated evacuation centers
- Other designated evacuation centers
- Safety evacuation area
- Landslide disaster caution zone (mudslide)
- Landslide disaster special caution zone (mudslide)
- Landslide disaster caution zone (rapid slope)
- Landslide disaster special caution zone (rapid slope)
- Landslide disaster caution zone (earth slide)
- Landslide disaster special caution zone (earth slide)
- Landslide disaster caution zone (yellow zone)**
A caution zone refers to the area of a land where risks to harm the residents' lives or bodies are recognized at times of landslide disaster.
- Landslide disaster special caution zone (red zone)**
A special caution zone refers to the area within the caution zone where risks to damage the buildings and harm the residents' lives or bodies are recognized at times of landslide disaster. In such a zone, certain developments are restricted and building construction restriction regulations apply.
- Mudslide**
Caution zone
Special caution zone
- Cliff failure**
Caution zone
Special caution zone
- Earth slides**
Caution zone
Special caution zone
- Inundation height caused by flood**
20m or more zone
10m-under 20m zone
5m-under 10m zone
3m-under 5m zone
0.5m-under 3m zone
under 0.5m zone
- Indication of assumed inundation height**
20m or more
10m (Inundation up to above 2nd floor ceiling)
5m (Inundation up to 2nd floor ceiling)
3m (Inundation up to 1st floor ceiling)
0.5m (Up to under the floorboards of the 1st floor)
- Areas with records of inundation (1999)
- Areas with records of inundation etc. (Flood, July 2018)
- Areas with records of inundation etc. (Running water, July 2018)
- City office / branch office
- National/prefectural facilities
- Police station
- Police box / residential police box
- Fire station
- Fire station branch office
- Water level station
- Precipitation station
- River surveillance camera
- Emergency water supply center
- Expressway
- National road
- Major local road
- General prefectural road
- Railway
- Regional border

First-opened designated evacuation center in each area				
Evacuation center that open first in each area when the evacuation information is issued.				
No.	Facility name	Address	Phone	Availability
103	Gota Community Center	11130-5 Goso, Saijo-cho	082-425-0101	● ● ● ●
104	Itaki Community Center	565-1 Maki, Saijo-cho	082-425-2688	● ● ● ●
105	Minaga Community Center	10927-2 Shimo-Minaga, Saijo-cho	082-426-0741	● ● ● ●

Other designated evacuation centers				
No.	Facility name	Address	Phone	Availability
115	Gota Elementary School	11133 Goso, Saijo-cho	082-425-0005	● ● ● ●
116	Koyu Junior High School	10025-2 Osawa, Saijo-cho	082-425-0007	● ● ● ●
117	Itaki Elementary School	10234-1 Morichika, Saijo-cho	082-425-0001	● ● ● ●
118	Higashiroshima Sports Park Gym	67-1 Taguchi, Saijo-cho	082-425-2525	● ● ● ●
119	Minaga Elementary School	10929-2 Shimo-Minaga, Saijo-cho	082-426-0005	● ● ● ●
123	Misonou Elementary School	8544-6 Misonou, Saijo-cho	082-422-6220	● ● ● ●
125	Misonou Kindergarten	3-6-27 Kagamiyama	082-422-4640	● ● ● ●

Safety evacuation area		
A place to evacuate when a fire caused by an earthquake etc. spreads widely.		
No.	Facility name	Address
100	Higashiroshima Sports Park	67-1 Taguchi, Saijo-cho