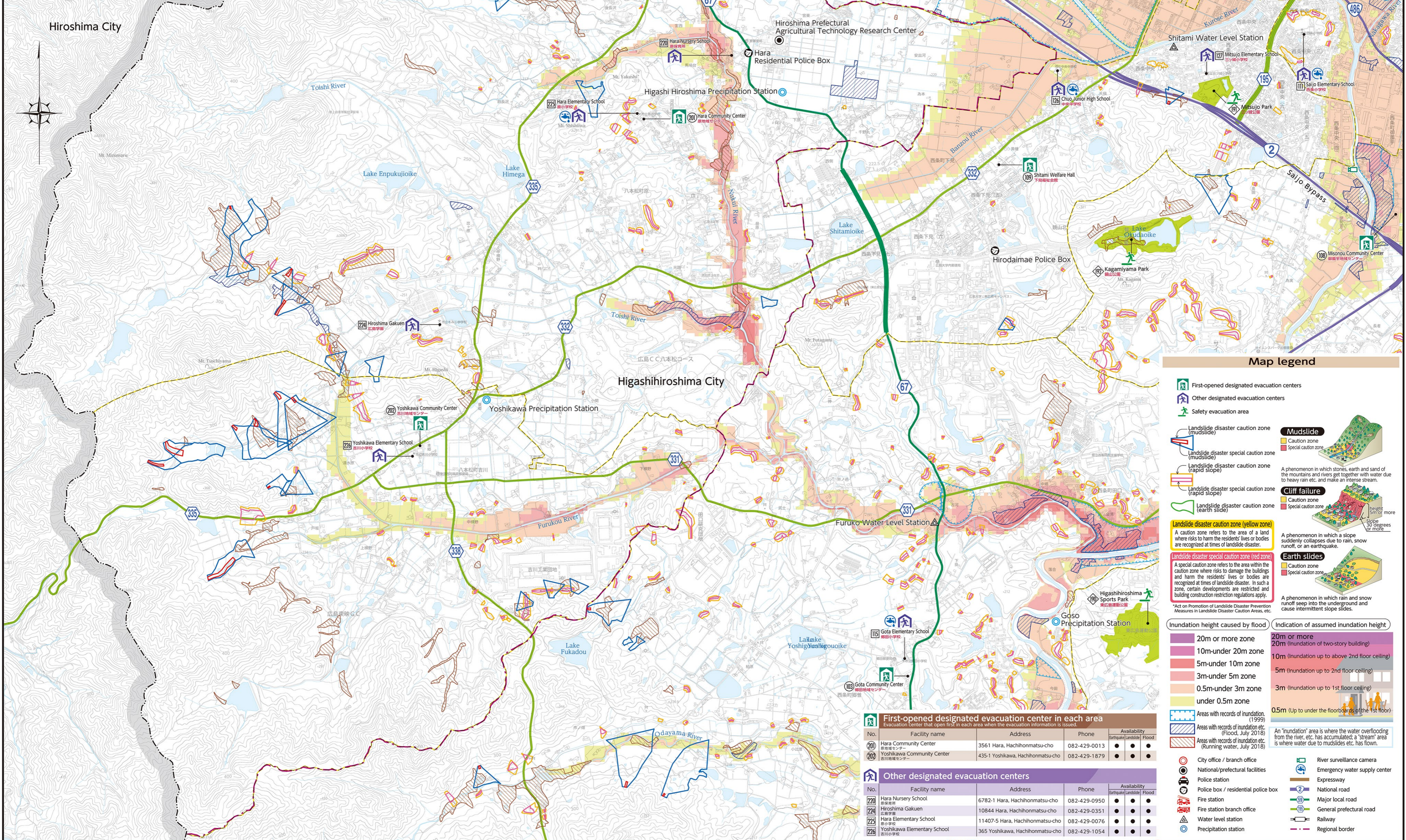


Higashiroshima City Hazard Map(Small and medium-sized rivers) [Southern area of Hachihonmatsu]

Scale: 1:17,500

Following are the differences between the May 2021 hazard map and this one:

	This time	May 2021
Assumptions for flooding	Heavy rain about once every 1,000 years	Heavy rain about once every 100 years
Rivers with inundation-assumed zones	Rivers above certain size	Kurose River, Nuta River, Nyuno River, Mitsuokawa River, part of Nukunashi River
Past disaster records	Storm rainfall of June 29, 1999, Storm rainfall of July 2018	(not listed here)



Map legend

- First-opened designated evacuation centers
- Other designated evacuation centers
- Safety evacuation area
- Landslide disaster caution zone (mudslide)
- Landslide disaster special caution zone (mudslide)
- Landslide disaster caution zone (rapid slope)
- Landslide disaster special caution zone (rapid slope)
- Landslide disaster caution zone (earth slide)
- Landslide disaster caution zone (yellow zone)
- Landslide disaster special caution zone (red zone)
- Inundation height caused by flood
- Indication of assumed inundation height
- Areas with records of inundation (1999)
- Areas with records of inundation etc. (Flood, July 2018)
- Areas with records of inundation etc. (Running water, July 2018)
- City office / branch office
- National/prefectural facilities
- Police station
- Police box / residential police box
- Fire station
- Fire station branch office
- Water level station
- Precipitation station
- River surveillance camera
- Emergency water supply center
- Expressway
- National road
- Major local road
- General prefectural road
- Railway
- Regional border

First-opened designated evacuation center in each area					
Evacuation center that open first in each area when the evacuation information is issued.					
No.	Facility name	Address	Phone	Availability	
201	Hara Community Center	3561 Hara, Hachihonmatsu-cho	082-429-0013	● ● ● ●	
202	Yoshikawa Community Center	435-1 Yoshikawa, Hachihonmatsu-cho	082-429-1879	● ● ● ●	

Other designated evacuation centers					
No.	Facility name	Address	Phone	Availability	
220	Hara Nursery School	6782-1 Hara, Hachihonmatsu-cho	082-429-0950	● ● ● ●	
224	Hiroshima Gakuen	10844 Hara, Hachihonmatsu-cho	082-429-0351	● ● ● ●	
225	Hara Elementary School	11407-5 Hara, Hachihonmatsu-cho	082-429-0076	● ● ● ●	
226	Yoshikawa Elementary School	365 Yoshikawa, Hachihonmatsu-cho	082-429-1054	● ● ● ●	