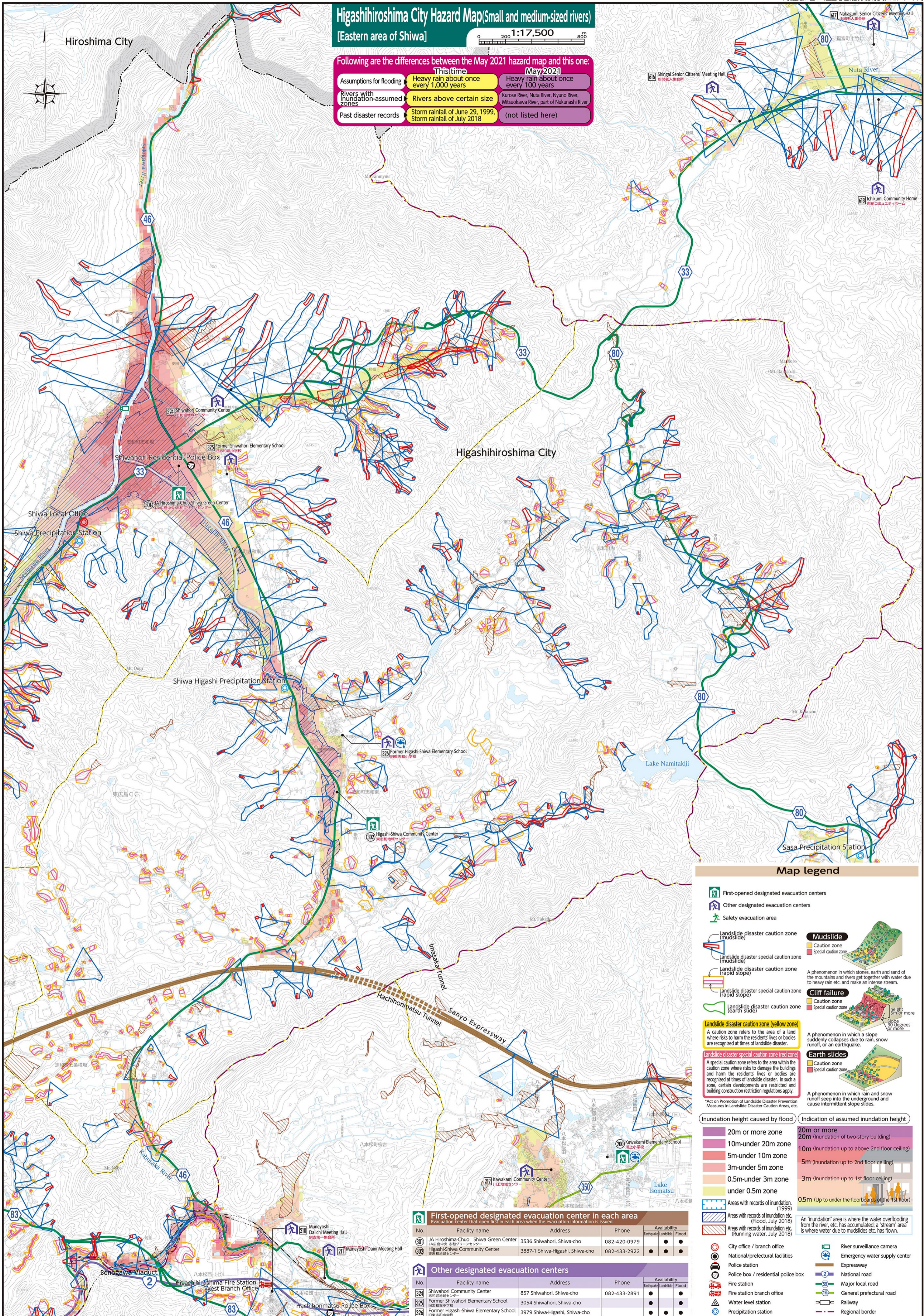


Higashiroshima City Hazard Map (Small and medium-sized rivers) [Eastern area of Shiwa]

Scale: 1:17,500

Following are the differences between the May 2021 hazard map and this one:

	This time	May 2021
Assumptions for flooding	Heavy rain about once every 1,000 years	Heavy rain about once every 100 years
Rivers with inundation-assumed zones	Rivers above certain size	Kurose River, Nuta River, Nyuno River, Mitsuokawa River, part of Nukunashi River
Past disaster records	Storm rainfall of June 29, 1999, Storm rainfall of July 2018	(not listed here)



Map legend

First-opened designated evacuation centers

- Other designated evacuation centers
- Safety evacuation area

Landslide disaster caution zone (mudslide)

- Landslide disaster special caution zone (mudslide)
- Landslide disaster caution zone (rapid slope)
- Landslide disaster special caution zone (rapid slope)
- Landslide disaster caution zone (earth slide)

Landslide disaster caution zone (yellow zone)

Landslide disaster special caution zone (red zone)

Mudslide

Cliff failure

Earth slides

Inundation height caused by flood

Indication of assumed inundation height

Other designated evacuation centers

Other facilities and infrastructure

First-opened designated evacuation center in each area				
No.	Facility name	Address	Phone	Availability
301	JA Hiroshima-Chuo Shiwa Green Center	3536 Shiwahori, Shiwa-cho	082-420-0979	● ● ●
302	Higashi-Shiwa Community Center	3887-1 Shiwa-Higashi, Shiwa-cho	082-433-2922	● ● ●

Other designated evacuation centers				
No.	Facility name	Address	Phone	Availability
324	Shiwahori Community Center	857 Shiwahori, Shiwa-cho	082-433-2891	● ● ●
325	Former Shiwahori Elementary School	3054 Shiwahori, Shiwa-cho		● ● ●
326	Former Higashi-Shiwa Elementary School	3979 Shiwa-Higashi, Shiwa-cho		● ● ●