

Higashiroshima City Hazard Map (Small and medium-sized rivers)

[Western area of Shiwa]

Scale: 1:17,500

Following are the differences between the May 2021 hazard map and this one:

	This time	May 2021
Assumptions for flooding	Heavy rain about once every 1,000 years	Heavy rain about once every 100 years
Rivers with inundation-assumed zones	Rivers above certain size	Kurose River, Nuta River, Nyuno River, Mitsuokawa River, part of Nukunashi River
Past disaster records	Storm rainfall of June 29, 1999, Storm rainfall of July 2018	(not listed here)

Map legend

First-opened designated evacuation centers
Other designated evacuation centers
Safety evacuation area

Landslide disaster caution zone (mudslide)
 Caution zone
 Special caution zone

Landslide disaster special caution zone (mudslide)
 Caution zone
 Special caution zone

Landslide disaster caution zone (rapid slope)
 Caution zone
 Special caution zone

Landslide disaster special caution zone (rapid slope)
 Caution zone
 Special caution zone

Landslide disaster caution zone (earth slide)
 Caution zone
 Special caution zone

Landslide disaster special caution zone (earth slide)
 Caution zone
 Special caution zone

Landslide disaster caution zone (yellow zone)
 A caution zone refers to the area of a land where risks to harm the residents' lives or bodies are recognized at times of landslide disaster.

Landslide disaster special caution zone (red zone)
 A special caution zone refers to the area within the caution zone where risks to damage the buildings and harm the residents' lives or bodies are recognized at times of landslide disaster. In such a zone, certain developments are restricted and building construction restriction regulations apply.

Mudslide
 A phenomenon in which stones, earth and sand of the mountains and rivers get together with water due to heavy rain etc. and make an intense stream.

Cliff failure
 A phenomenon in which a slope suddenly collapses due to rain, snow runoff, or an earthquake.

Earth slides
 A phenomenon in which rain and snow runoff seep into the underground and cause intermittent slope slides.

Inundation height caused by flood

20m or more zone	20m or more (Inundation of two-story building)
10m-under 20m zone	10m (Inundation up to above 2nd floor ceiling)
5m-under 10m zone	5m (Inundation up to 2nd floor ceiling)
3m-under 5m zone	3m (Inundation up to 1st floor ceiling)
0.5m-under 3m zone	0.5m (Up to under the floorboards of the 1st floor)
under 0.5m zone	

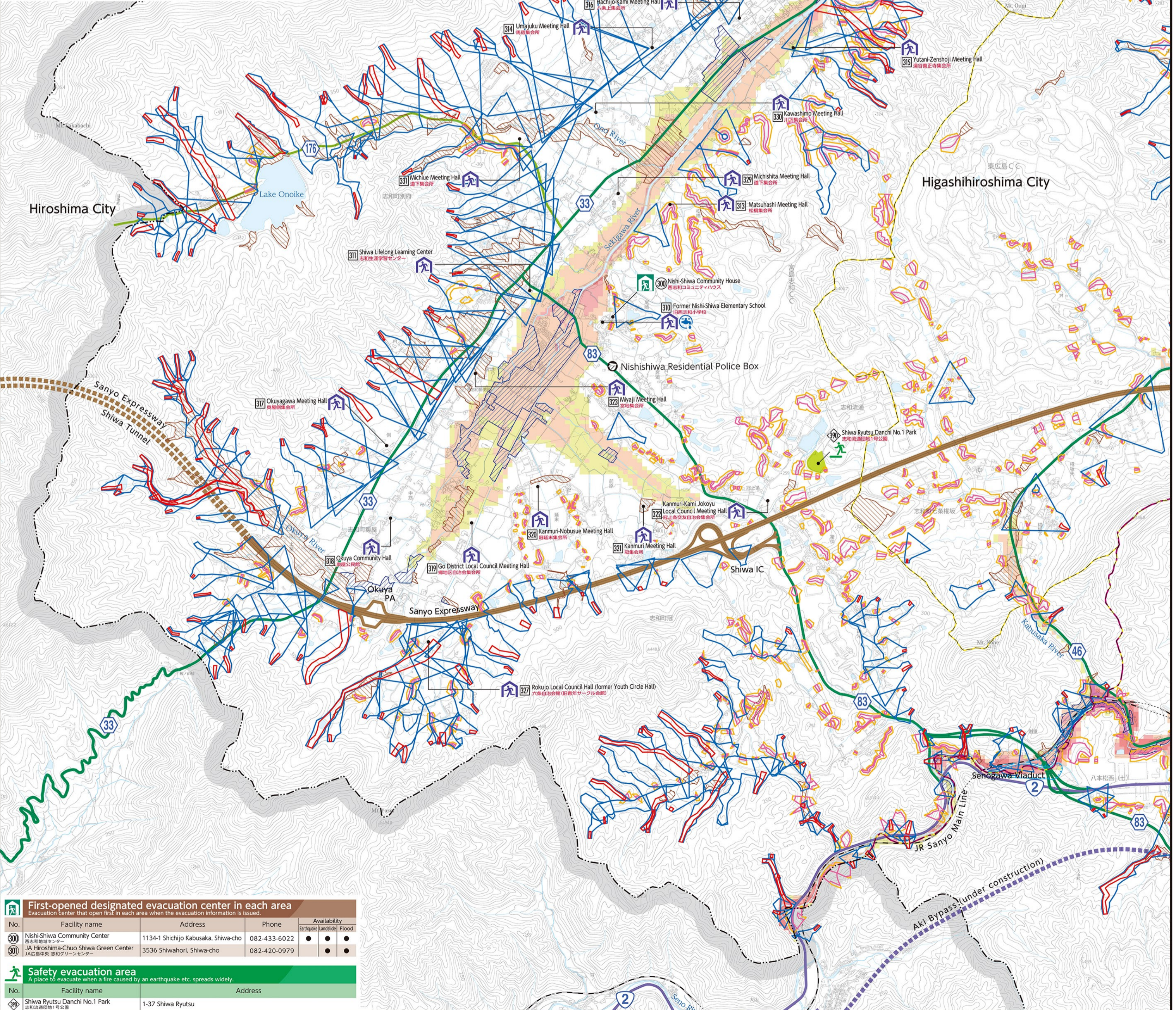
Indication of assumed inundation height

Areas with records of inundation
 Areas with records of inundation etc. (Flood, July 2018)
 Areas with records of inundation etc. (Running water, July 2018)

Other symbols:
 City office / branch office
 National/prefectural facilities
 Police station
 Police box / residential police box
 Fire station
 Fire station branch office
 Water level station
 Precipitation station
 River surveillance camera
 Emergency water supply center
 Expressway
 National road
 Major local road
 General prefectural road
 Railway
 Regional border

Other designated evacuation centers

No.	Facility name	Address	Phone	Availability
310	Former Nishi-Shiwa Elementary School	1670 Shichijo Kabusaka, Shiwa-cho		● ● ●
312	Shiwa Elementary School / Shiwa Junior High School	1432 Shiwa-Nishi, Shiwa-cho	082-433-2019	● ● ●
313	Matsuhashi Meeting Hall	140 Shiwa-Nishi, Shiwa-cho		● ● ●
314	Umajuku Meeting Hall	2103-4 Shiwa-Nishi, Shiwa-cho		● ● ●
315	Yutani-Zenshoji Meeting Hall	832-1 Shiwa-Nishi, Shiwa-cho		● ● ●
316	Hachijo-Kami Meeting Hall	10755-1 Shiwa-Nishi, Shiwa-cho		● ● ●
317	Okuyagawa Meeting Hall	2350-3 Okuya, Shiwa-cho		● ● ●
318	Okuya Community Hall	2059-3 Okuya, Shiwa-cho		● ● ●
319	Go District Local Council Meeting Hall	1954-1 Okuya, Shiwa-cho		● ● ●
320	Kanmuri-Nobusue Meeting Hall	1340 Kanmuri, Shiwa-cho		● ● ●
321	Kanmuri Meeting Hall	682-1 Kanmuri, Shiwa-cho		● ● ●
322	Kanmuri-Kamijo Koyu Local Council Meeting Hall	156-1 Kanmuri, Shiwa-cho		● ● ●
323	Miyaji Meeting Hall	290-3 Befu, Shiwa-cho		● ● ●
324	Shiwhori Community Center	857 Shiwhori, Shiwa-cho	082-433-2891	● ● ●
325	Former Shiwhori Elementary School	3054 Shiwhori, Shiwa-cho		● ● ●
327	Rokujo Local Council Hall (former Youth Circle Hall)	1377-5 Okuya, Shiwa-cho		● ● ●
328	Befu Community Hall	726-1 Befu, Shiwa-cho		● ● ●
329	Michishita Meeting Hall	1435-1 Befu, Shiwa-cho		● ● ●
330	Kawashimo Meeting Hall	1923-3 Befu, Shiwa-cho		● ● ●
331	Michiue Meeting Hall	1677-2 Befu, Shiwa-cho		● ● ●



First-opened designated evacuation center in each area
 Evacuation center that open first in each area when the evacuation information is issued.

No.	Facility name	Address	Phone	Availability
300	Nishi-Shiwa Community Center	1134-1 Shichijo Kabusaka, Shiwa-cho	082-433-6022	● ● ●
301	JA Hiroshima-Chuo Shiwa Green Center	3536 Shiwhori, Shiwa-cho	082-420-0979	● ● ●

Safety evacuation area
 A place to evacuate when a fire caused by an earthquake etc. spreads widely.

No.	Facility name	Address
302	Shiwa Ryutsu Danchi No.1 Park	1-37 Shiwa Ryutsu