

# Higashiroshima City Hazard Map(Small and medium-sized rivers)

## [Western area of Takaya]

Scale: 1:17,500

Following are the differences between the May 2021 hazard map and this one:

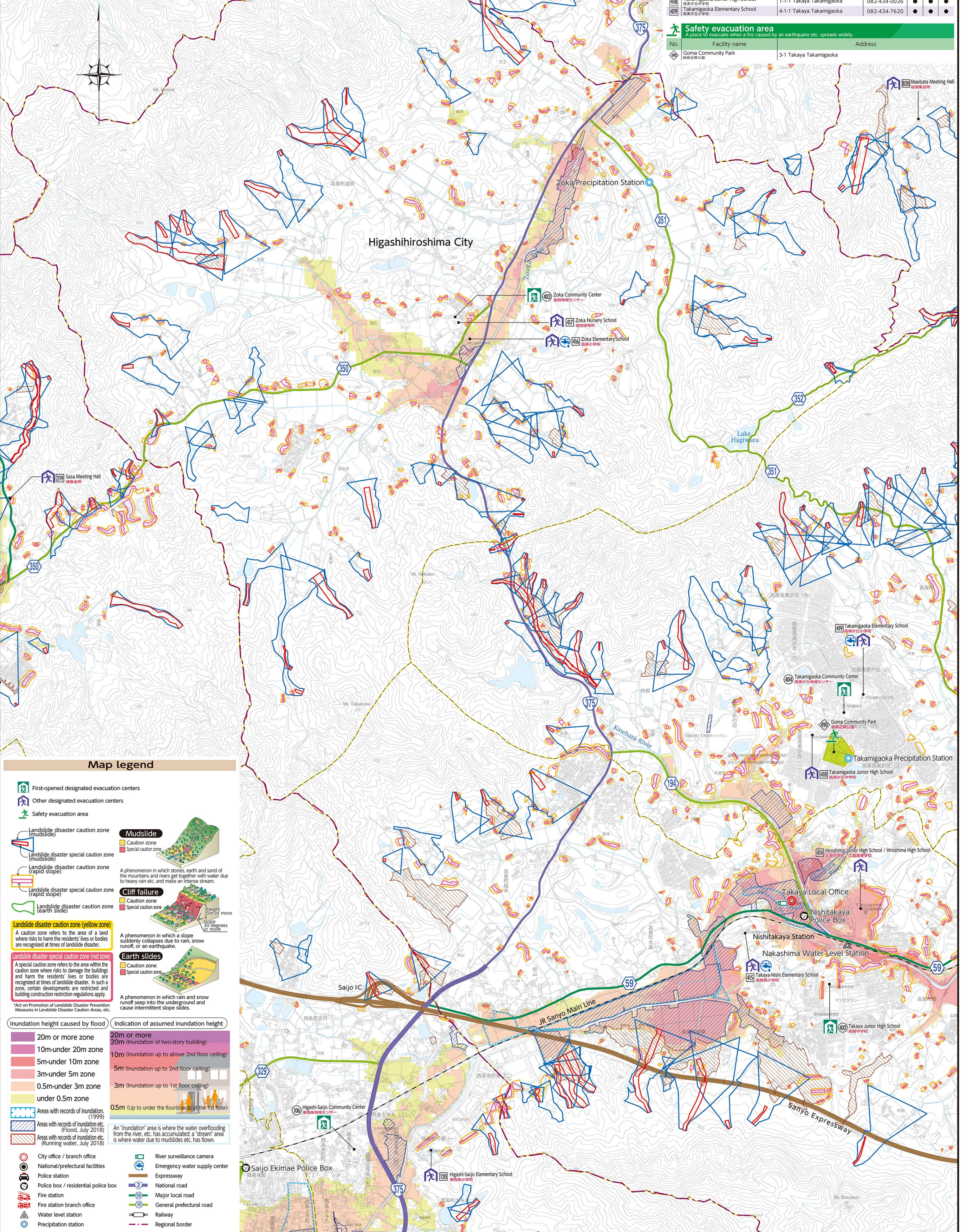
Assumptions for flooding	This time Heavy rain about once every 1,000 years	May 2021 Heavy rain about once every 100 years
Rivers with inundation-assumed zones	Rivers above certain size	Kurose River, Nuta River, Nyuno River, Mitsukawa River, part of Nukunashi River
Past disaster records	Storm rainfall of June 29, 1999, Storm rainfall of July 2018	(not listed here)

First-opened designated evacuation center in each area						
Evacuation center that open first in each area when the evacuation information is issued.						
No.	Facility name	Address	Phone	Availability		
				Earthquake	Landslide	Flood
402	Takaya Junior High School	760 Nakashima, Takaya-cho	082-434-0011	●	●	●
403	Zoka Community Center	3638-1 Zoka, Takaya-cho	082-436-0896	●	●	●
404	Takamigaoka Community Center	4-34-2 Takaya Takamigaoka	082-434-9500	●	●	●

Other designated evacuation centers						
No.	Facility name	Address	Phone	Availability		
				Earthquake	Landslide	Flood
414	Hiroshima Junior High School / Hiroshima High School	31-7 Nakashima, Takaya-cho	082-491-0270	●	●	●
415	Takaya-Nishi Elementary School	582 Nakashima, Takaya-cho	082-434-0003	●	●	●
416	Zoka Elementary School	2774-1 Zoka, Takaya-cho	082-436-0002	●	●	●
417	Zoka Nursery School	3686 Zoka, Takaya-cho	082-436-0012	●	●	●
418	Takamigaoka Junior High School	1-1-1 Takaya Takamigaoka	082-434-0026	●	●	●
419	Takamigaoka Elementary School	4-1-1 Takaya Takamigaoka	082-434-7620	●	●	●

Safety evacuation area		
A place to evacuate when a fire caused by an earthquake etc. spreads widely.		
No.	Facility name	Address
820	Goma Community Park	3-1 Takaya Takamigaoka



### Map legend

**Evacuation Centers:**

- First-opened designated evacuation centers (Green house icon)
- Other designated evacuation centers (Blue house icon)
- Safety evacuation area (Green tree icon)

**Landslide Hazard Zones:**

- Mudslide:**
  - Caution zone (Yellow)
  - Special caution zone (Red)
- Cliff failure:**
  - Caution zone (Yellow)
  - Special caution zone (Red)
- Earth slides:**
  - Caution zone (Yellow)
  - Special caution zone (Red)

**Inundation Height Legend:**

- 20m or more zone (Dark purple)
- 10m-under 20m zone (Purple)
- 5m-under 10m zone (Pinkish-purple)
- 3m-under 5m zone (Pink)
- 0.5m-under 3m zone (Light pink)
- under 0.5m zone (Yellow)

**Other Symbols:**

- City office / branch office
- National/prefectural facilities
- Police station
- Police box / residential police box
- Fire station
- Fire station branch office
- Water level station
- Precipitation station
- River surveillance camera
- Emergency water supply center
- Expressway
- National road
- Major local road
- General prefectural road
- Railway
- Regional border