

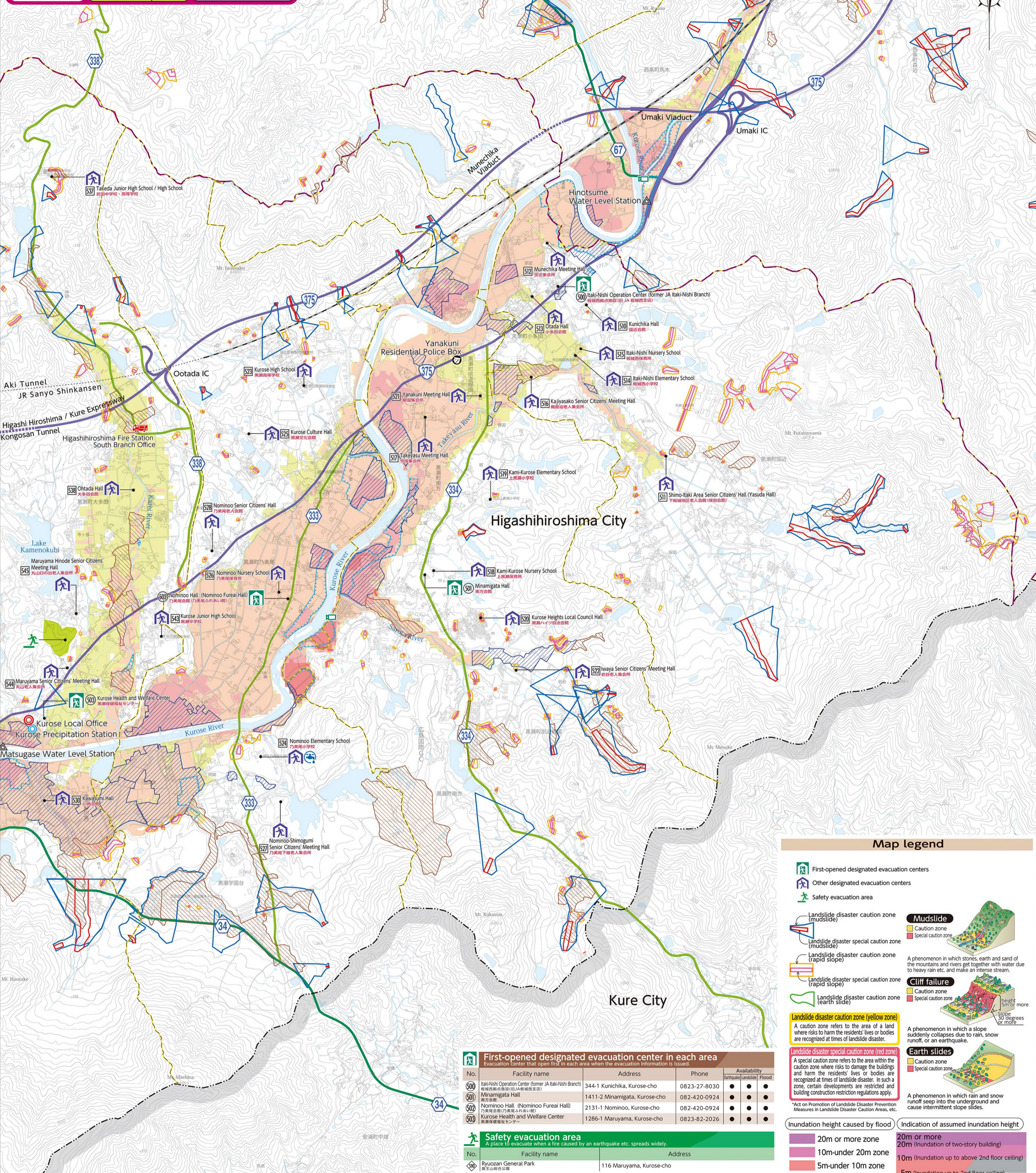
Higashiroshima City Hazard Map (Small and medium-sized rivers)

[Eastern area of Kurose]

Scale: 1:17,500

Following are the differences between the May 2021 hazard map and this one:

Assumptions for flooding	This time: Heavy rain about once every 1,000 years	May 2021: Heavy rain about once every 100 years
Rivers with inundation-assumed zones	Rivers above certain size	Kurose River, Nuta River, Nyuno River, Mitsuokawa River, part of Nukunashi River
Past disaster records	Storm rainfall of June 29, 1999, Storm rainfall of July 2018	(not listed here)



Map legend

Evacuation Centers:

- First-opened designated evacuation centers (House icon)
- Other designated evacuation centers (House icon with number)
- Safety evacuation area (Green icon)

Landslide Disaster Caution Zones:

- Landslide disaster caution zone (mudslide) - Caution zone (Yellow), Special caution zone (Red)
- Landslide disaster special caution zone (mudslide) - Caution zone (Yellow), Special caution zone (Red)
- Landslide disaster caution zone (rapid slope) - Caution zone (Yellow), Special caution zone (Red)
- Landslide disaster special caution zone (rapid slope) - Caution zone (Yellow), Special caution zone (Red)
- Landslide disaster caution zone (earth slide) - Caution zone (Yellow), Special caution zone (Red)

Mudslide: A phenomenon in which stones, earth and sand of the mountains and rivers get together with water due to heavy rain etc. and make an intense stream.

Cliff failure: A phenomenon in which a slope suddenly collapses due to rain, snow runoff, or an earthquake.

Earth slides: A phenomenon in which rain and snow runoff seep into the underground and cause intermittent slope slides.

Landslide disaster caution zone (yellow zone): A caution zone refers to the area of a land where risks to harm the residents' lives or bodies are recognized at times of landslide disaster.

Landslide disaster special caution zone (red zone): A special caution zone refers to the area within the caution zone where risks to damage the buildings and harm the residents' lives or bodies are recognized at times of landslide disaster. In such a zone, certain developments are restricted and building construction restriction regulations apply.

Inundation height caused by flood:

- 20m or more zone
- 10m-under 20m zone
- 5m-under 10m zone
- 3m-under 5m zone
- 0.5m-under 3m zone
- under 0.5m zone

Indication of assumed inundation height:

- 20m or more (Inundation of two-story building)
- 10m (Inundation up to above 2nd floor ceiling)
- 5m (Inundation up to 2nd floor ceiling)
- 3m (Inundation up to 1st floor ceiling)
- 0.5m (Up to under the floorboards of the 1st floor)

Other symbols:

- City office / branch office
- National/prefectural facilities
- Police station
- Police box / residential police box
- Fire station
- Fire station branch office
- Water level station
- Precipitation station
- River surveillance camera
- Emergency water supply center
- Expressway
- National road
- Major local road
- General prefectural road
- Railway
- Regional border

First-opened designated evacuation center in each area						
Evacuation Center that open first in each area when the evacuation information is issued.						
No.	Facility name	Address	Phone	Availability	Earthquake	Flood
500	Itaki-Nishi Operation Center (former JA Itaki-Nishi Branch)	344-1 Kunichika, Kurose-cho	0823-27-8030	●	●	●
501	Minamigata Hall	1411-2 Minamigata, Kurose-cho	082-420-0924	●	●	●
502	Nominoo Hall (Nominoo Fureai Hall)	2131-1 Nominoo, Kurose-cho	082-420-0924	●	●	●
503	Kurose Health and Welfare Center	1286-1 Maruyama, Kurose-cho	0823-82-2026	●	●	●

Safety evacuation area		
A place to evacuate when a fire caused by an earthquake etc. spreads widely.		
No.	Facility name	Address
1	Ryuozan General Park	116 Maruyama, Kurose-cho

Other designated evacuation centers						
No.	Facility name	Address	Phone	Availability	Earthquake	Flood
510	Kunichika Hall	360 Kunichika, Kurose-cho		●	●	●
511	Shimo-Itaki Area Senior Citizens' Hall (Yasuda Hall)	778 Kunichika, Kurose-cho		●	●	●
512	Munechika Meeting Hall	139-2 Munechika Yanakuni, Kurose-cho		●	●	●
513	Ohtada Hall	174-1 Ohtada, Kurose-cho		●	●	●
514	Itaki-Nishi Elementary School	257 Ohtada, Kurose-cho	0823-82-2149	●	●	●
515	Itaki-Nishi Nursery School	438-1 Ohtada, Kurose-cho	0823-82-5051	●	●	●
516	Kajiyasako Senior Citizens' Meeting Hall	1187-3 Ohtada, Kurose-cho		●	●	●
517	Takeyasu Meeting Hall	350 Minamigata, Kurose-cho		●	●	●
518	Kami-Kurose Nursery School	1411 Minamigata, Kurose-cho	0823-82-5243	●	●	●
519	Kami-Kurose Elementary School	10271-2 Munechika Yanakuni, Kurose-cho	0823-82-2805	●	●	●
520	Kurose Heights Local Council Hall	391-1 Munechika Yanakuni, Kurose-cho		●	●	●
521	Yanakuni Meeting Hall	1552-8 Munechika Yanakuni, Kurose-cho		●	●	●
522	Iwaya Senior Citizens' Meeting Hall	2771-1 Munechika Yanakuni, Kurose-cho		●	●	●
523	Kurose High School	1 Nominoo, Kurose-cho	0823-82-2525	●	●	●
524	Nominoo Elementary School	10554-1 Nominoo, Kurose-cho	0823-82-2016	●	●	●
525	Kurose Culture Hall	890-1 Nominoo, Kurose-cho	0823-82-6100	●	●	●
526	Nominoo Nursery School	203-2 Kawasumi, Kurose-cho	0823-82-5241	●	●	●
527	Nominoo-Shimogumi Senior Citizens' Meeting Hall	10552-1 Nominoo, Kurose-cho		●	●	●
528	Nominoo Senior Citizens' Hall	1720-2 Nominoo, Kurose-cho		●	●	●
529	Kawasumi Hall	203-2 Kawasumi, Kurose-cho		●	●	●
530	Takeda Junior High School / High School	443-5 Ohtada, Kurose-cho	0823-82-2331	●	●	●
538	Ohtada Hall	2606-3 Ohtada, Kurose-cho		●	●	●
543	Kurose Junior High School	82-1 Maruyama, Kurose-cho	0823-82-2039	●	●	●
544	Maruyama Senior Citizens' Meeting Hall	10163-1 Maruyama, Kurose-cho		●	●	●
545	Maruyama Hinode Senior Citizens' Meeting Hall	947 Maruyama, Kurose-cho		●	●	●