

Higashihiroshima City Hazard Map(Small and medium-sized rivers)

[Northern area of Toyosaka]

Scale: 1:17,500

Following are the differences between the May 2021 hazard map and this one:

Assumptions for flooding	This time Heavy rain about once every 1,000 years	May 2021 Heavy rain about once every 100 years
Rivers with inundation-assumed zones	Rivers above certain size	Kurose River, Nuta River, Nyuno River, Mitsuokawa River, part of Nukunashi River
Past disaster records	Storm rainfall of June 29, 1999, Storm rainfall of July 2018	(not listed here)

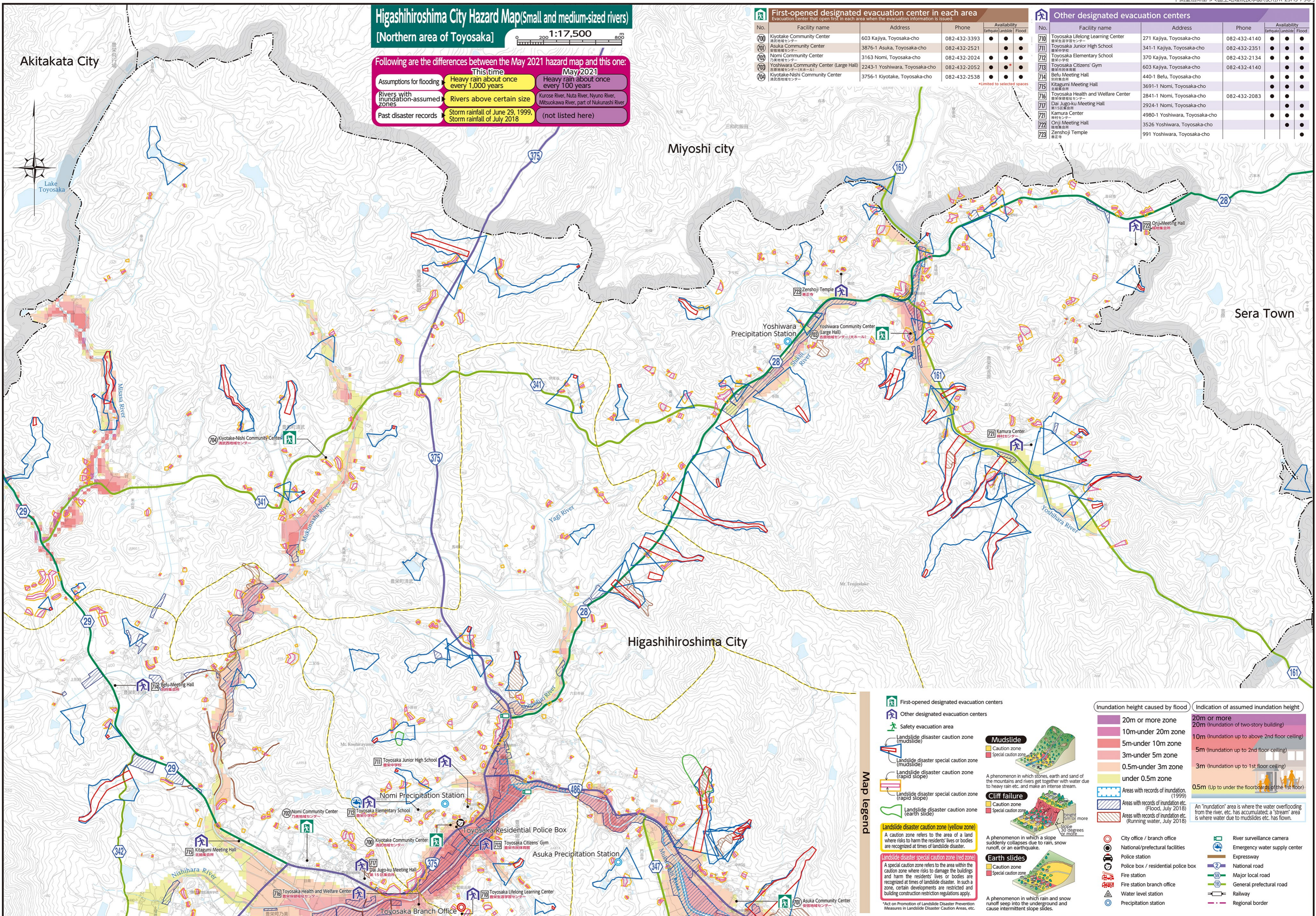
First-opened designated evacuation center in each area

Evacuation center that open first in each area when the evacuation information is issued.

No.	Facility name	Address	Phone	Availability Earthquake/Landslide/Flood
700	Kiyotake Community Center 高松地域センター	603 Kajiya, Toyosaka-cho	082-432-3393	● ● ●
701	Asuka Community Center 安部地域センター	3876-1 Asuka, Toyosaka-cho	082-432-2521	● ● ●
702	Nomi Community Center 野見地域センター	3163 Nomi, Toyosaka-cho	082-432-2024	● ● ●
703	Yoshiwara Community Center (Large Hall) 吉原地域センター(大ホール)	2243-1 Yoshiwara, Toyosaka-cho	082-432-2052	● ● ●
704	Kiyotake-Nishi Community Center 高松西地域センター	3756-1 Kiyotake, Toyosaka-cho	082-432-2538	● ● ●

Other designated evacuation centers

No.	Facility name	Address	Phone	Availability Earthquake/Landslide/Flood
710	Toyosaka Lifelong Learning Center 高松生涯学習センター	271 Kajiya, Toyosaka-cho	082-432-4140	● ● ●
711	Toyosaka Junior High School 豊栄中学校	341-1 Kajiya, Toyosaka-cho	082-432-2351	● ● ●
712	Toyosaka Elementary School 豊栄小学校	370 Kajiya, Toyosaka-cho	082-432-2134	● ● ●
713	Toyosaka Citizens' Gym 豊栄市民体育館	603 Kajiya, Toyosaka-cho	082-432-4140	● ● ●
714	Betu Meeting Hall 北津島公民館	440-1 Betu, Toyosaka-cho		● ● ●
715	Kitagumi Meeting Hall 北郷公民館	3691-1 Nomi, Toyosaka-cho		● ● ●
716	Toyosaka Health and Welfare Center 高松健康福祉センター	2841-1 Nomi, Toyosaka-cho	082-432-2083	● ● ●
717	Dai Jugo-ku Meeting Hall 第15区公民館	2924-1 Nomi, Toyosaka-cho		● ● ●
721	Kamura Center 上村センター	4980-1 Yoshiwara, Toyosaka-cho		● ● ●
722	Onji Meeting Hall 大正公民館	3526 Yoshiwara, Toyosaka-cho		● ● ●
723	Zenshoji Temple 善正寺	991 Yoshiwara, Toyosaka-cho		● ● ●



Map legend

- First-opened designated evacuation centers
- Other designated evacuation centers
- Safety evacuation area
- Landslide disaster caution zone (mudslide)
- Landslide disaster special caution zone (rapid slope)
- Landslide disaster caution zone (earth slide)
- Landslide disaster special caution zone (earth slide)
- Landslide disaster caution zone (yellow zone)
- Landslide disaster special caution zone (red zone)

Inundation height caused by flood

- 20m or more zone
- 10m-under 20m zone
- 5m-under 10m zone
- 3m-under 5m zone
- 0.5m-under 3m zone
- under 0.5m zone

Indication of assumed inundation height

- 20m or more (Inundation of two-story building)
- 10m (Inundation up to above 2nd floor ceiling)
- 5m (Inundation up to 2nd floor ceiling)
- 3m (Inundation up to 1st floor ceiling)
- 0.5m (Up to under the floorboards of the 1st floor)

Other symbols

- City office / branch office
- National/prefectural facilities
- Police station
- Police box / residential police box
- Fire station
- Fire station branch office
- Water level station
- Precipitation station
- River surveillance camera
- Emergency water supply center
- Expressway
- National road
- Major local road
- General prefectural road
- Railway
- Regional border