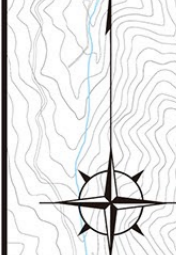


Higashiroshima City Hazard Map(Small and medium-sized rivers) [Southern area of Toyosaka]

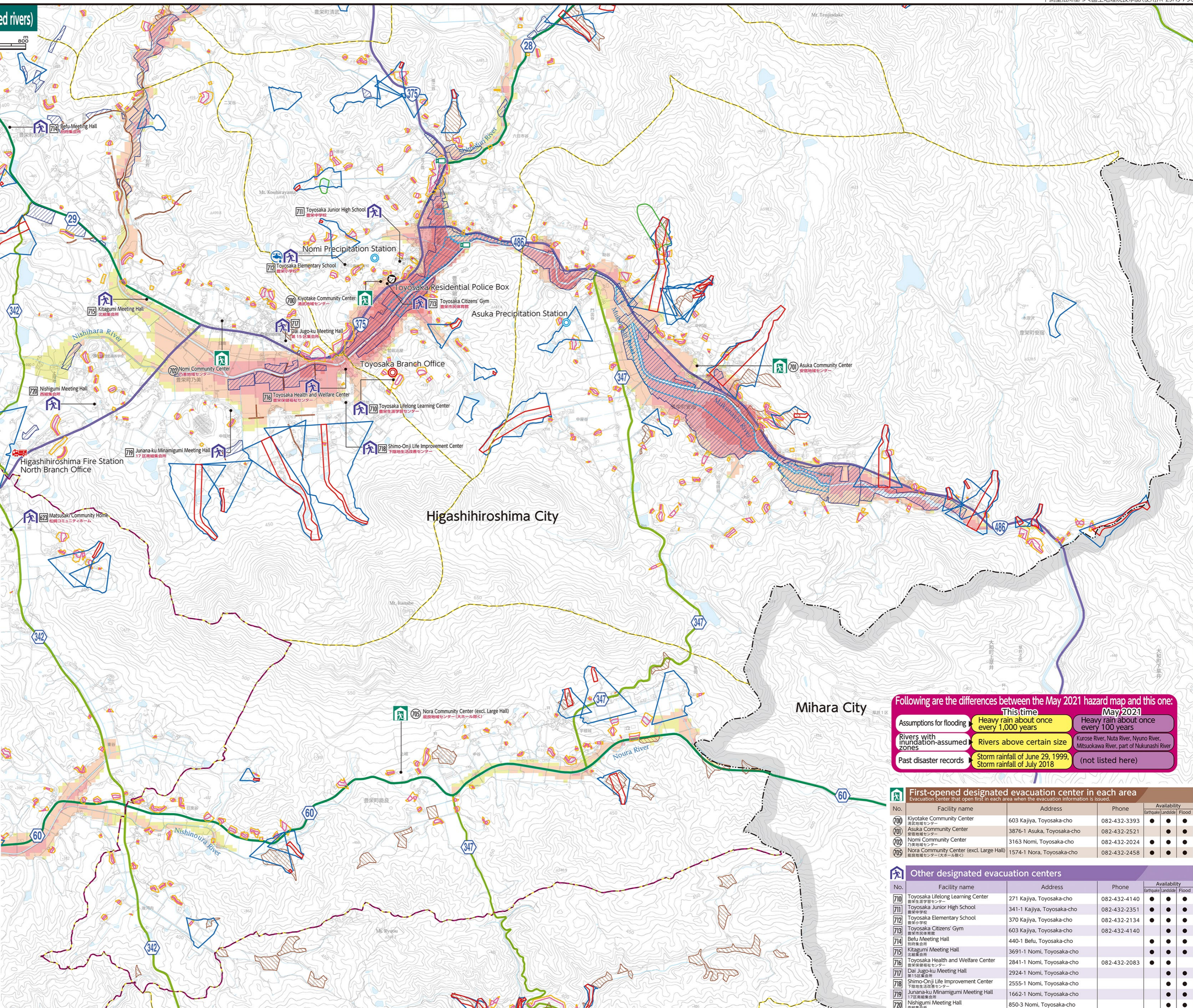
Scale: 1:17,500

Akitakata City



Map legend

- First-opened designated evacuation centers
- Other designated evacuation centers
- Safety evacuation area
- Landslide disaster caution zone (mudslide)
- Landslide disaster special caution zone (mudslide)
- Landslide disaster caution zone (rapid slope)
- Landslide disaster special caution zone (rapid slope)
- Landslide disaster caution zone (earth slide)
- Landslide disaster special caution zone (earth slide)
- Landslide disaster caution zone (yellow zone)
- Landslide disaster special caution zone (red zone)
- Earth slides
- Inundation height caused by flood
- Indication of assumed inundation height
- Areas with records of inundation
- Areas with records of inundation etc. (Flood, July 2018)
- Areas with records of inundation etc. (Running water, July 2018)
- City office / branch office
- National/prefectural facilities
- Police station
- Police box / residential police box
- Fire station
- Fire station branch office
- Water level station
- Precipitation station
- River surveillance camera
- Emergency water supply center
- Expressway
- National road
- Major local road
- General prefectural road
- Railway
- Regional border



Following are the differences between the May 2021 hazard map and this one:

	This time	May 2021
Assumptions for flooding	Heavy rain about once every 1,000 years	Heavy rain about once every 100 years
Rivers with inundation-assumed zones	Rivers above certain size	Kurose River, Nuta River, Nyuno River, Mitsuokawa River, part of Nukunashi River
Past disaster records	Storm rainfall of June 29, 1999, Storm rainfall of July 2018	(not listed here)

First-opened designated evacuation center in each area
Evacuation Center that open first in each area when the evacuation information is issued.

No.	Facility name	Address	Phone	Availability
				Earthquake Landslide Flood
700	Kiyotake Community Center	603 Kajiya, Toyosaka-cho	082-432-3393	● ● ●
701	Asuka Community Center	3876-1 Asuka, Toyosaka-cho	082-432-2521	● ● ●
702	Nomi Community Center	3163 Nomi, Toyosaka-cho	082-432-2024	● ● ●
703	Nora Community Center (excl. Large Hall)	1574-1 Nora, Toyosaka-cho	082-432-2458	● ● ●

Other designated evacuation centers

No.	Facility name	Address	Phone	Availability
				Earthquake Landslide Flood
710	Toyosaka Lifelong Learning Center	271 Kajiya, Toyosaka-cho	082-432-4140	● ● ●
711	Toyosaka Junior High School	3411-1 Kajiya, Toyosaka-cho	082-432-2351	● ● ●
712	Toyosaka Elementary School	370 Kajiya, Toyosaka-cho	082-432-2134	● ● ●
713	Toyosaka Citizens' Gym	603 Kajiya, Toyosaka-cho	082-432-4140	● ● ●
714	Betu Meeting Hall	440-1 Betu, Toyosaka-cho		● ● ●
715	Kitagumi Meeting Hall	3691-1 Nomi, Toyosaka-cho		● ● ●
716	Toyosaka Health and Welfare Center	2841-1 Nomi, Toyosaka-cho	082-432-2083	● ● ●
717	Dai Jugo-ku Meeting Hall	2924-1 Nomi, Toyosaka-cho		● ● ●
718	Shimo-Onji Life Improvement Center	2555-1 Nomi, Toyosaka-cho		● ● ●
719	Junana-ku Minamigumi Meeting Hall	1662-1 Nomi, Toyosaka-cho		● ● ●
720	Nishigumi Meeting Hall	850-3 Nomi, Toyosaka-cho		● ● ●