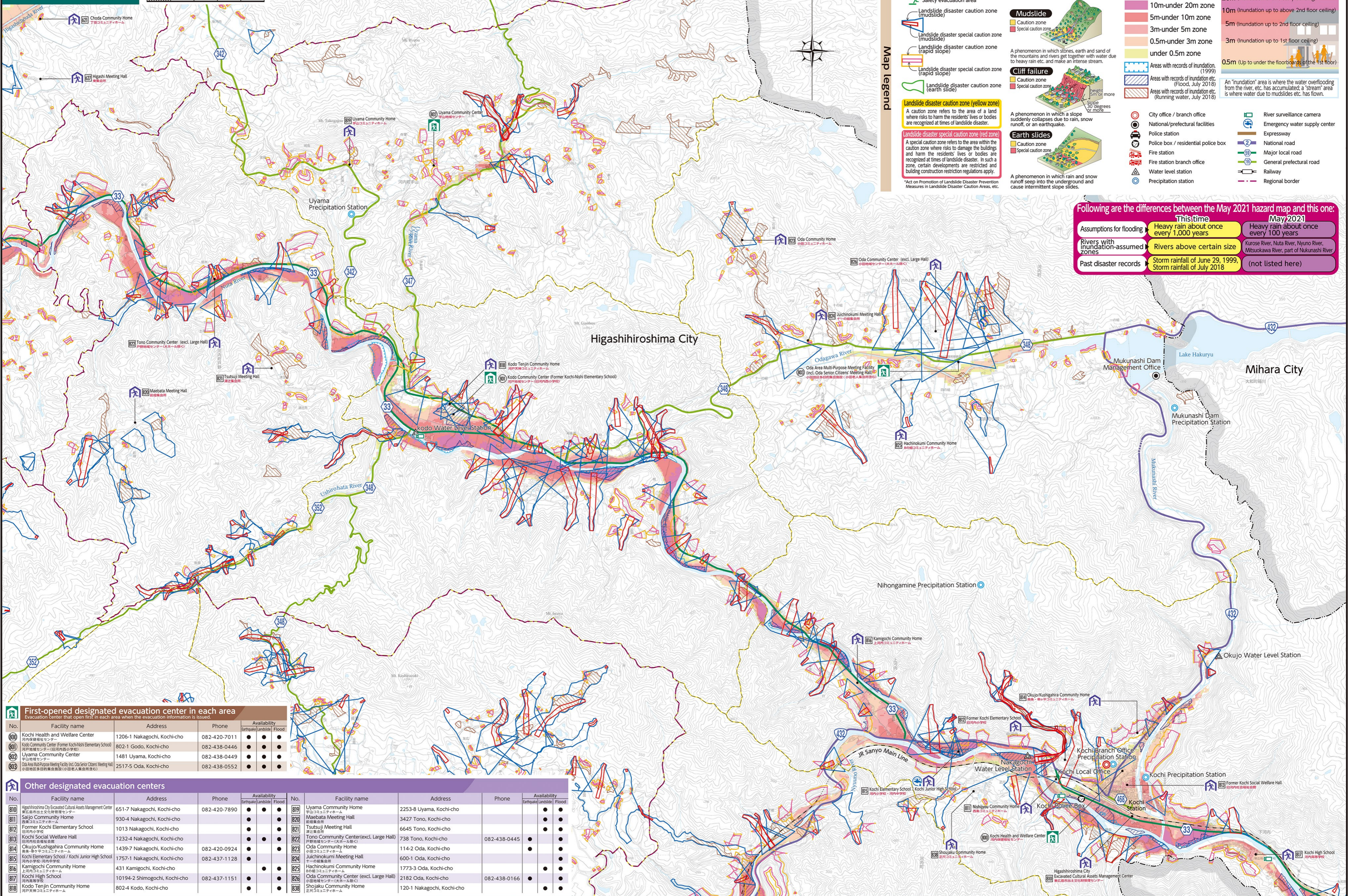


Higashiroshima City Hazard Map (Small and medium-sized rivers)

[Northern area of Kochi]

Scale: 1:20,000



Map legend

- Evacuation Centers:**
 - First-opened designated evacuation centers (Green house icon)
 - Other designated evacuation centers (Blue house icon)
 - Safety evacuation area (Green person icon)
- Landslide Disaster Caution Zones:**
 - Landslide disaster caution zone (mudslide) (Yellow outline)
 - Landslide disaster special caution zone (rapid slope) (Red outline)
 - Landslide disaster caution zone (earth slide) (Green outline)
- Landslide Types:**
 - Mudslide:** A phenomenon in which stones, earth and sand of the mountains and rivers get together with water due to heavy rain etc. and make an intense stream.
 - Cliff failure:** A phenomenon in which a slope suddenly collapses due to rain, snow runoff, or an earthquake.
 - Earth slides:** A phenomenon in which rain and snow runoff seep into the underground and cause intermittent slope slides.
- Flood Inundation Heights:**
 - 20m or more zone (Dark purple)
 - 10m-under 20m zone (Purple)
 - 5m-under 10m zone (Red-orange)
 - 3m-under 5m zone (Orange)
 - 0.5m-under 3m zone (Light orange)
 - under 0.5m zone (Yellow)
- Inundation Assumptions:**
 - Areas with records of inundation (1999) (Blue hatched)
 - Areas with records of inundation etc. (Flood, July 2018) (Red hatched)
 - Areas with records of inundation etc. (Running water, July 2018) (Green hatched)
- Assumed Inundation Heights:**
 - 20m or more (Inundation of two-story building)
 - 10m (Inundation up to above 2nd floor ceiling)
 - 5m (Inundation up to 2nd floor ceiling)
 - 3m (Inundation up to 1st floor ceiling)
 - 0.5m (Up to under the floorboards of the 1st floor)
- Other Facilities:**
 - City office / branch office (Red circle)
 - National/prefectural facilities (Blue circle)
 - Police station (Black circle)
 - Police box / residential police box (Red circle)
 - Fire station (Red square)
 - Fire station branch office (Red square)
 - Water level station (Blue circle)
 - Precipitation station (Blue circle)
 - River surveillance camera (Green camera icon)
 - Emergency water supply center (Blue water tap icon)
 - Expressway (Blue line)
 - National road (Yellow line)
 - Major local road (Green line)
 - General prefectural road (Blue line)
 - Railway (Black line)
 - Regional border (Dashed line)

Following are the differences between the May 2021 hazard map and this one:

	This time	May 2021
Assumptions for flooding	Heavy rain about once every 1,000 years	Heavy rain about once every 100 years
Rivers with inundation-assumed zones	Rivers above certain size	Kurose River, Nuta River, Nyuno River, Mitsuokawa River, part of Nukunashi River
Past disaster records	Storm rainfall of June 29, 1999, Storm rainfall of July 2018	(not listed here)

First-opened designated evacuation center in each area

Evacuation center that open first in each area when the evacuation information is issued.

No.	Facility name	Address	Phone	Availability		
				Earthquake	Landslide	Flood
800	Kochi Health and Welfare Center	1206-1 Nakagochi, Kochi-cho	082-420-7011	●	●	●
801	Kodo Community Center (Former Kochi-Nishi Elementary School)	802-1 Godo, Kochi-cho	082-438-0446	●	●	●
802	Uyama Community Center	1481 Uyama, Kochi-cho	082-438-0449	●	●	●
803	Oda Multi-Purpose Meeting Facility (incl. Oda Senior Citizens' Meeting Hall)	2517-5 Oda, Kochi-cho	082-438-0552	●	●	●

Other designated evacuation centers

No.	Facility name	Address	Phone	Availability	No.	Facility name	Address	Phone	Availability				
				Earthquake	Landslide	Flood							
810	Higashiroshima City Excavated Cultural Assets Management Center	651-7 Nakagochi, Kochi-cho	082-420-7890	●	●	●	819	Uyama Community Home	2253-8 Uyama, Kochi-cho	●	●	●	
811	Saijo Community Home	930-4 Nakagochi, Kochi-cho		●	●	●	820	Maebata Meeting Hall	3427 Tono, Kochi-cho	●	●	●	
812	Former Kochi Elementary School	1013 Nakagochi, Kochi-cho		●	●	●	821	Tsutsuji Meeting Hall	6645 Tono, Kochi-cho	●	●	●	
813	Kochi Social Welfare Hall	1232-4 Nakagochi, Kochi-cho		●	●	●	822	Tono Community Center(excl. Large Hall)	738 Tono, Kochi-cho	082-438-0445	●	●	●
814	Okujo/Kushigahira Community Home	1439-7 Nakagochi, Kochi-cho	082-420-0924	●	●	●	823	Oda Community Home	114-2 Oda, Kochi-cho		●	●	●
815	Kochi Elementary School / Kochi Junior High School	1757-1 Nakagochi, Kochi-cho	082-437-1128	●	●	●	824	Juichinokumi Meeting Hall	600-1 Oda, Kochi-cho		●	●	●
816	Kamigochi Community Home	431 Kamigochi, Kochi-cho		●	●	●	825	Hachinokumi Community Home	1773-3 Oda, Kochi-cho		●	●	●
817	Kochi High School	10194-2 Shimogochi, Kochi-cho	082-437-1151	●	●	●	826	Oda Community Center (excl. Large Hall)	2182 Oda, Kochi-cho	082-438-0166	●	●	●
818	Kodo Tenjin Community Home	802-4 Kodo, Kochi-cho		●	●	●	828	Shoaku Community Home	120-1 Nakagochi, Kochi-cho		●	●	●