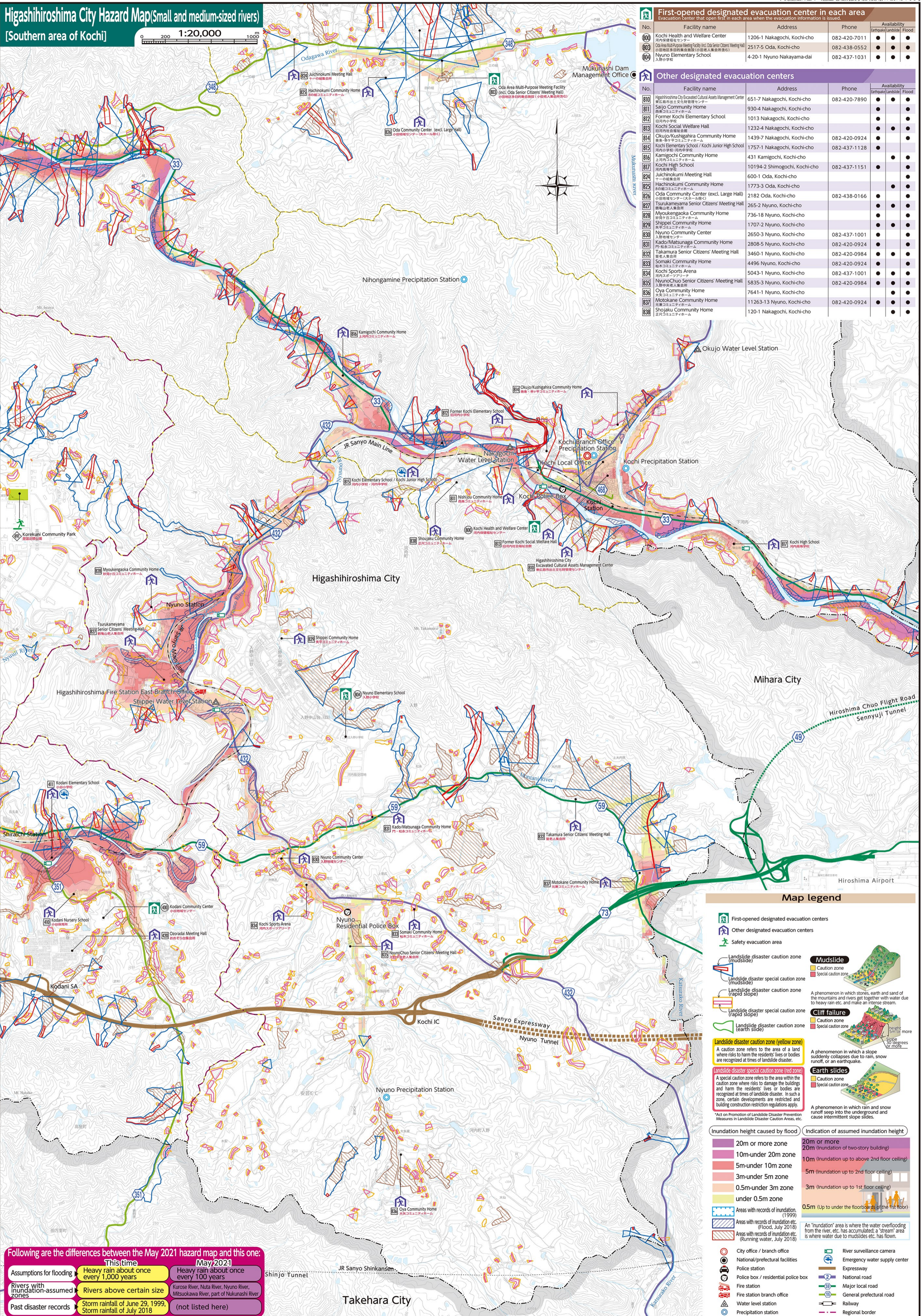


Higashiroshima City Hazard Map (Small and medium-sized rivers)

[Southern area of Kochi]

Scale: 1:20,000



First-opened designated evacuation center in each area						
Evacuation center that open first in each area when the evacuation information is issued.						
No.	Facility name	Address	Phone	Availability	Baroque/Landside	Flood
800	Kochi Health and Welfare Center	1206-1 Nakagochi, Kochi-cho	082-420-7011	●	●	●
803	Oda Area Multi-Purpose Meeting Facility (incl. Oda Senior Citizens Meeting Hall)	2517-5 Oda, Kochi-cho	082-438-0552	●	●	●
804	Nyuno Elementary School	4-20-1 Nyuno Nakayama-dai	082-437-1031	●	●	●

Other designated evacuation centers						
No.	Facility name	Address	Phone	Availability	Baroque/Landside	Flood
810	HighProforma Co. Excavated Cultural Assets Management Center	651-7 Nakagochi, Kochi-cho	082-420-7890	●	●	●
811	Saijo Community Home	930-4 Nakagochi, Kochi-cho		●	●	●
812	Former Kochi Elementary School	1013 Nakagochi, Kochi-cho		●	●	●
813	Kochi Social Welfare Hall	1232-4 Nakagochi, Kochi-cho		●	●	●
814	Okujo/Kushigahira Community Home	1439-7 Nakagochi, Kochi-cho	082-420-0924	●	●	●
815	Kochi Elementary School / Kochi Junior High School	1757-1 Nakagochi, Kochi-cho	082-437-1128	●	●	●
816	Kamigochi Community Home	431 Kamigochi, Kochi-cho		●	●	●
817	Kochi High School	10194-2 Shimogochi, Kochi-cho	082-437-1151	●	●	●
824	Juichinokumi Meeting Hall	600-1 Oda, Kochi-cho		●	●	●
825	Hachinokumi Community Home	1773-3 Oda, Kochi-cho		●	●	●
826	Oda Community Center (excl. Large Hall)	2182 Oda, Kochi-cho	082-438-0166	●	●	●
827	Tsurukameyama Senior Citizens Meeting Hall	265-2 Nyuno, Kochi-cho		●	●	●
828	Miyukagaoka Community Home	736-18 Nyuno, Kochi-cho		●	●	●
829	Shippel Community Home	1707-2 Nyuno, Kochi-cho		●	●	●
830	Nyuno Community Center	2650-3 Nyuno, Kochi-cho	082-437-1001	●	●	●
831	Kado/Matsunaga Community Home	2808-5 Nyuno, Kochi-cho	082-420-0924	●	●	●
832	Takamura Senior Citizens Meeting Hall	3460-1 Nyuno, Kochi-cho	082-420-0984	●	●	●
833	Somaki Community Home	4496 Nyuno, Kochi-cho	082-420-0924	●	●	●
834	Kochi Sports Arena	5043-1 Nyuno, Kochi-cho	082-437-1001	●	●	●
835	NyunoChuo Senior Citizens Meeting Hall	5835-3 Nyuno, Kochi-cho	082-420-0984	●	●	●
836	Oya Community Home	7641-1 Nyuno, Kochi-cho		●	●	●
837	Motokane Community Home	11263-13 Nyuno, Kochi-cho	082-420-0924	●	●	●
838	Shojaku Community Home	120-1 Nakagochi, Kochi-cho		●	●	●

Map legend

- First-opened designated evacuation centers
- Other designated evacuation centers
- Safety evacuation area
- Landslide disaster caution zone (mudslide)
- Landslide disaster special caution zone (mudslide)
- Landslide disaster caution zone (rapid slope)
- Landslide disaster special caution zone (rapid slope)
- Landslide disaster caution zone (earth slide)
- Landslide disaster special caution zone (yellow zone)
- Landslide disaster special caution zone (red zone)
- City office / branch office
- National/prefectural facilities
- Police station
- Police box / residential police box
- Fire station
- Fire station branch office
- Water level station
- Precipitation station
- River surveillance camera
- Emergency water supply center
- Expressway
- National road
- Major local road
- General prefectural road
- Railway
- Regional border

Mudslide

A phenomenon in which stones, earth and sand of the mountains and rivers get together with water due to heavy rain etc. and make an intense stream.

Cliff failure

A phenomenon in which a slope suddenly collapses due to rain, snow runoff, or an earthquake.

Earth slides

A phenomenon in which rain and snow runoff seep into the underground and cause intermittent slope slides.

Inundation height caused by flood

- 20m or more zone
- 10m-under 20m zone
- 5m-under 10m zone
- 3m-under 5m zone
- 0.5m-under 3m zone
- under 0.5m zone

Indication of assumed inundation height

- 20m or more (inundation of two-story building)
- 10m (inundation up to above 2nd floor ceiling)
- 5m (inundation up to 2nd floor ceiling)
- 3m (inundation up to 1st floor ceiling)
- 0.5m (Up to under the floorboards of the 1st floor)

An "inundation" area is where the water overflowing from the river, etc. has accumulated; a "stream" area is where water due to mudslides etc. has flown.

Following are the differences between the May 2021 hazard map and this one:

Assumptions for flooding	This time	May 2021
Rivers with inundation-assumed zones	Heavy rain about once every 1,000 years	Heavy rain about once every 100 years
Past disaster records	Rivers above certain size	Kurose River, Nuta River, Nyuno River, Mitsuokawa River, part of Nukunashi River
	Storm rainfall of June 29, 1999, Storm rainfall of July 2018	(not listed here)