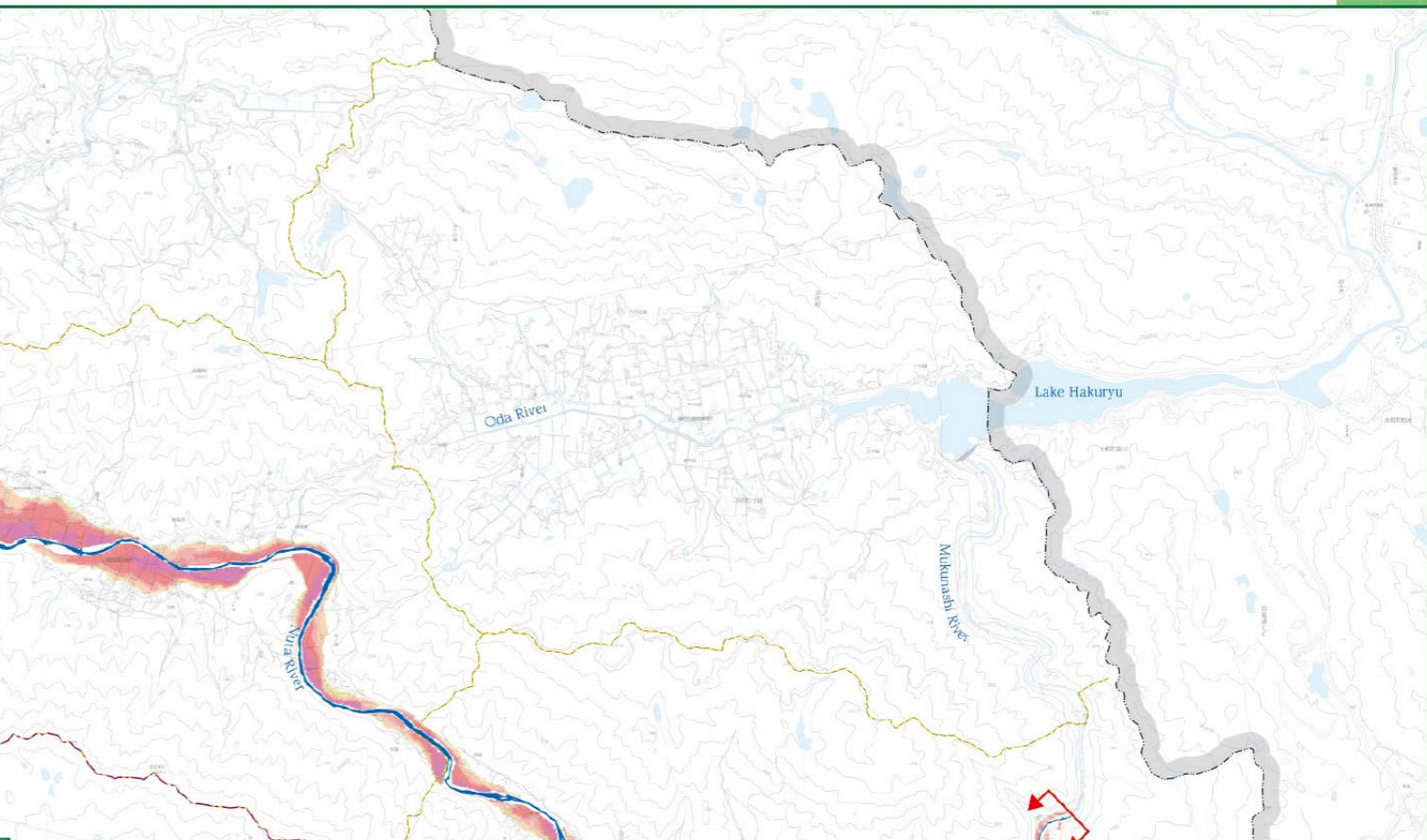
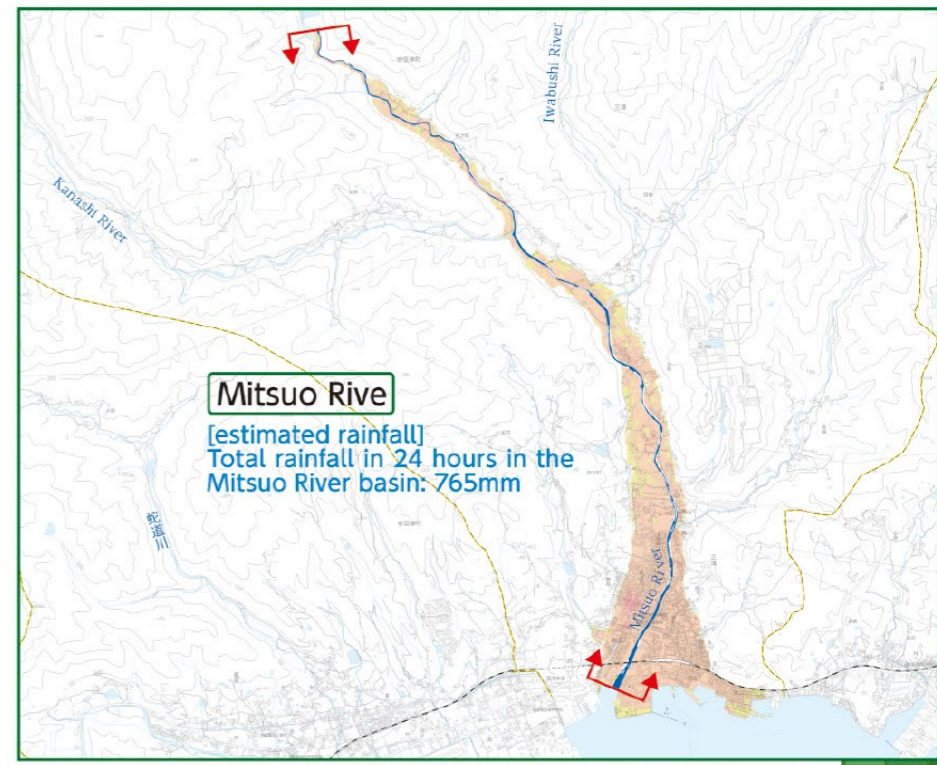
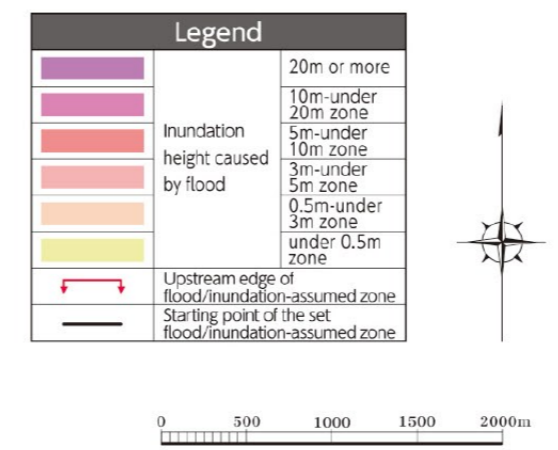
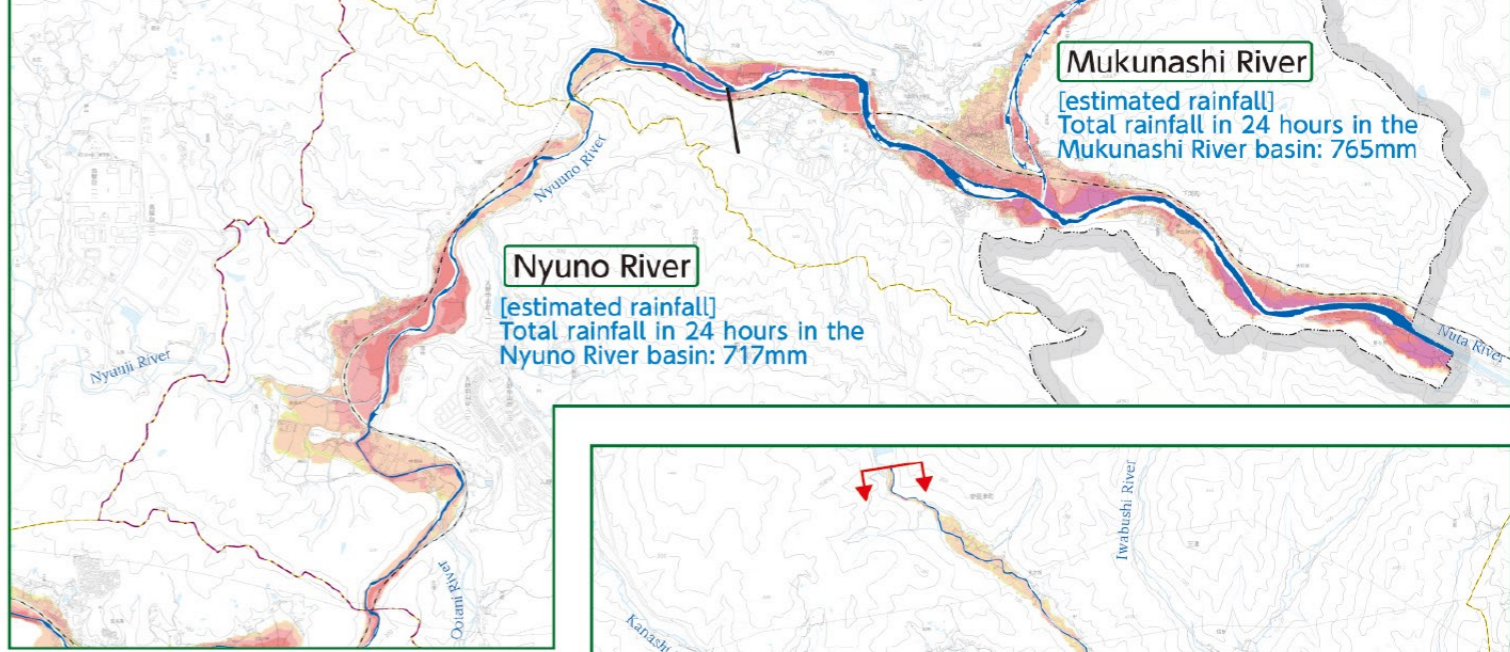
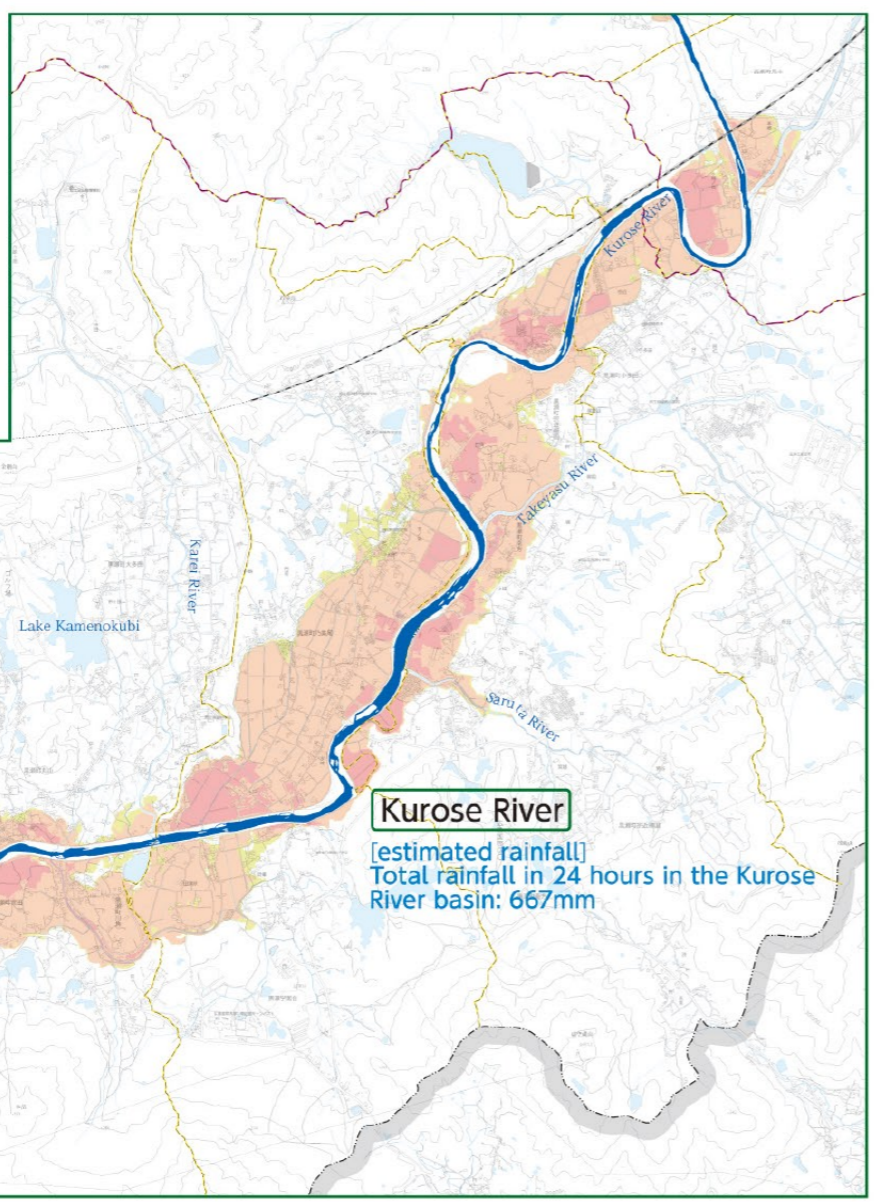
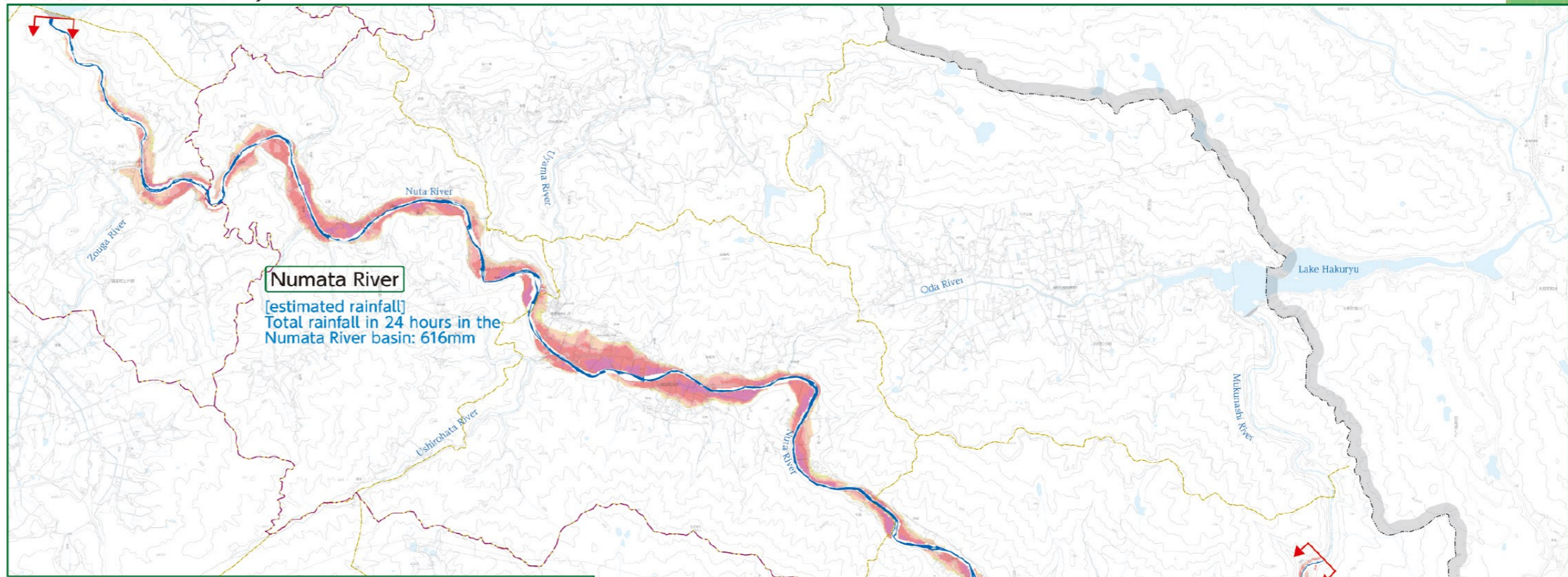
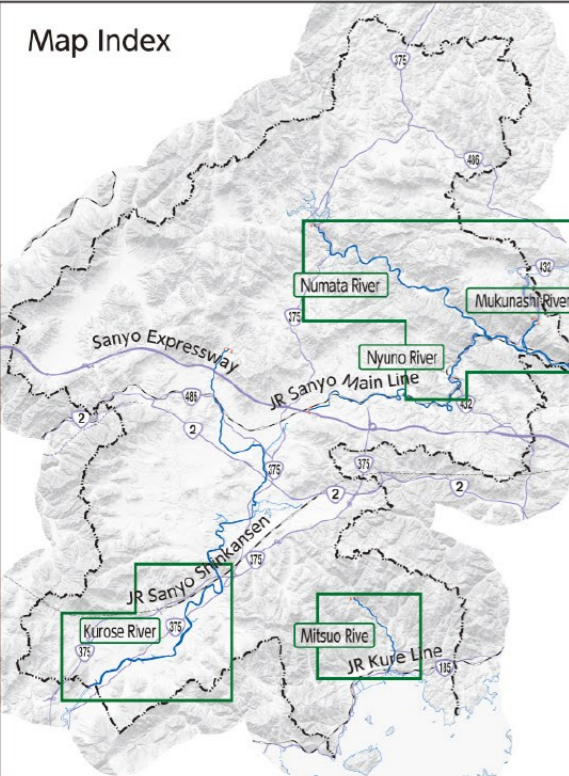


# River Inundation Area Map (Estimated at Maximum)

(Explanation)

- (1) This map shows the flood/inundation-assumed zone based on the maximum possible rainfall as specified in the Flood Prevention Act, and the estimated depth of water in case of inundation, for the well-known water level and upstream zones of the Kurose River of the Kurose river system, Numata, Mukunashi, and Nyuno Rivers of the Numata River system, and Mitsuo River of the Mitsuo river system.
- (2) This flood/inundation-assumed zone map is a simulated situation of the inundation in case of river flood due to the maximum possible rainfall based on the river channel and the maintenance situation of flood control facilities at time of specification.
- (3) The simulation does not take into consideration the flood due to the outburst of the branch river, the rainfall that exceeds the size of the rainfall on which the simulation is based, the flood due to inland water, etc. Therefore inundation may occur at zones not specified (shown) on this river inundation area map, and the estimated inundation height may be different from reality.



(cf.) Maximum rainfall in 24 hours in Higashihiroshima City observed in the 2018 Japan Floods (July 2018): 334.5mm