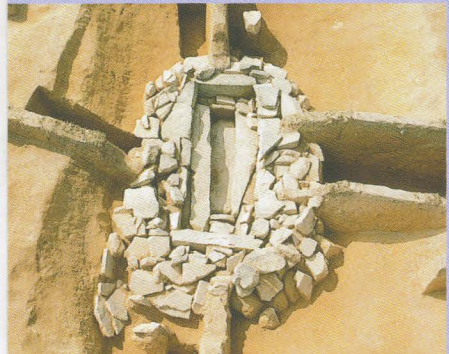
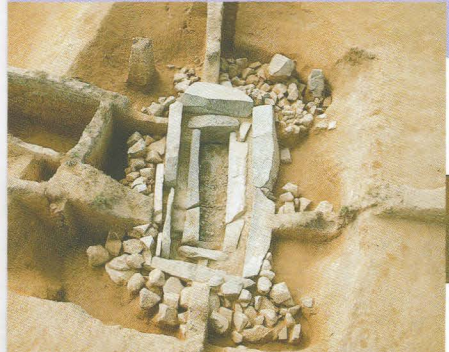




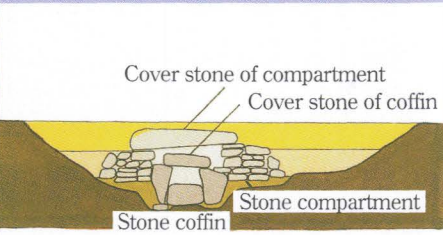
Facilities of No.1 tumulus (1989)



No1. facility (1989)



No2. facility (1989)

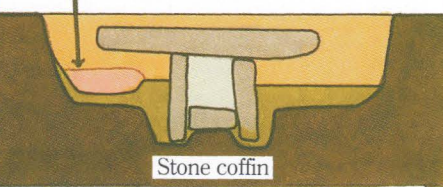


Cover stone of compartment
Cover stone of coffin
Stone coffin
Stone compartment

No.3 facility consists of a stone coffin only. An iron spearhead and some iron arrowheads were discovered in the burial pit beside the coffin.



No3. facility (1989)



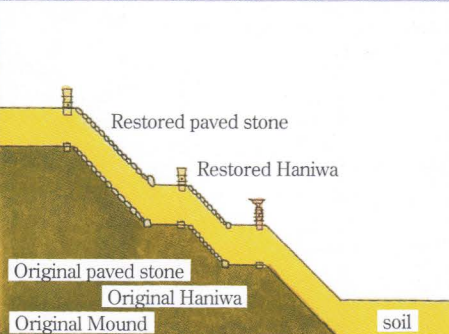
Stone coffin



Original Haniwa



Mound (after restoration)

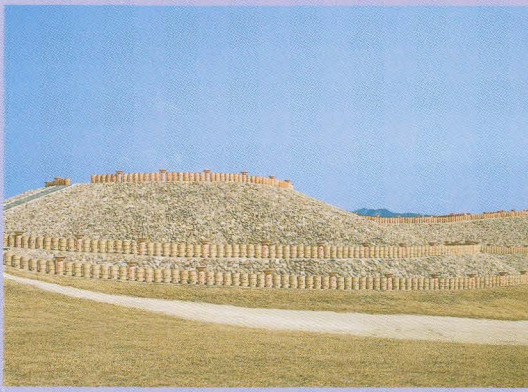


Restored paved stone
Restored Haniwa
Original paved stone
Original Haniwa
Original Mound
soil

Restoration of tumuli

During the restoration of the tumuli, about 0.7 meters of new soil was added to protect the original tumuli and to cover up any damage caused during the 1500 years when the tumuli were discovered.

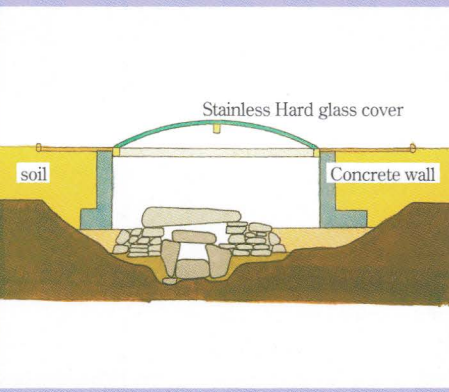
We can see the original stone coffin of No.1 tumulus through the hard glass.



Haniwa line (after restoration)



Facilities (after restoration)

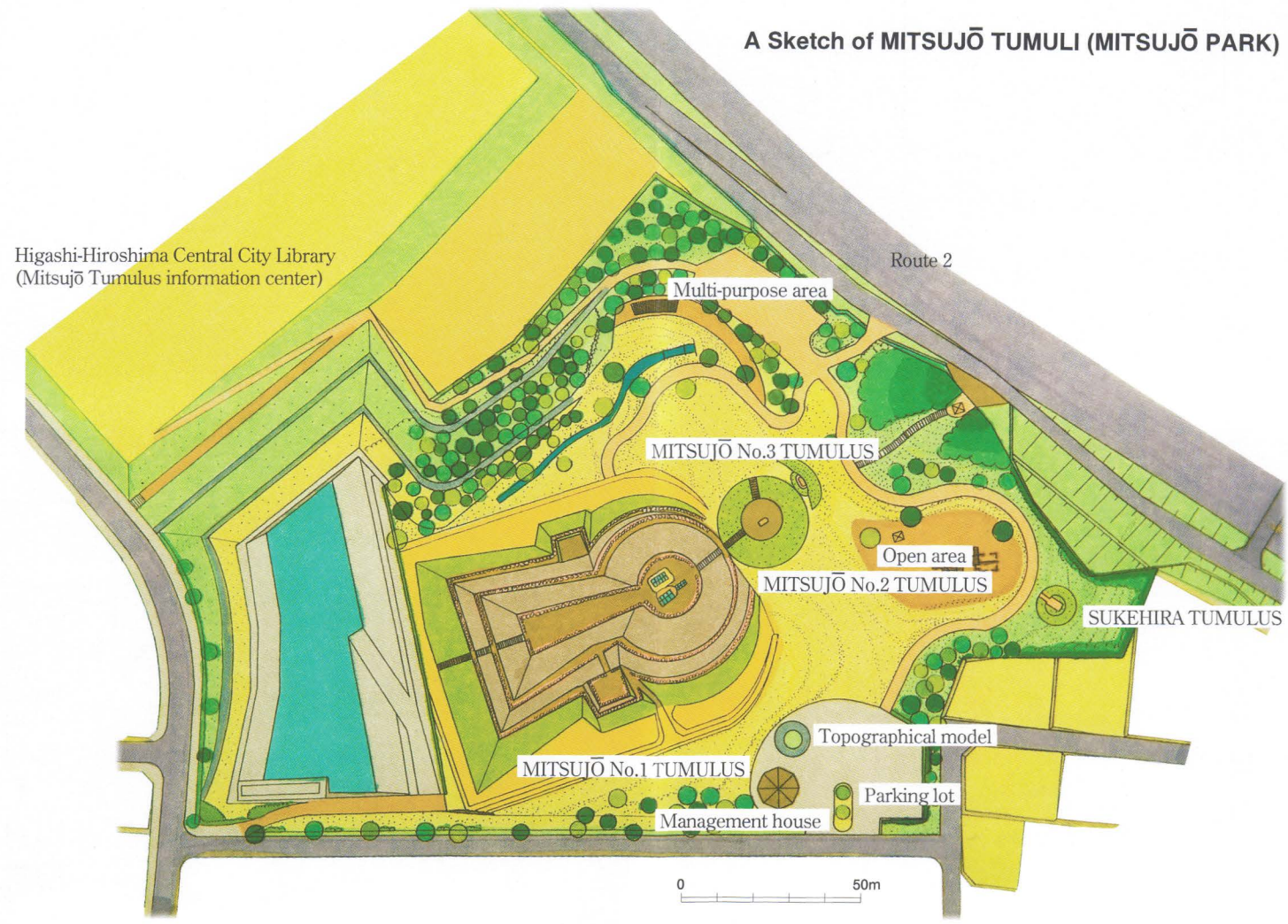


Stainless Hard glass cover
soil
Concrete wall

Facilities of No.1 Tumulus

Each body was laid to rest in each one of the three facilities in the round rear area of the mound. Of the two stone facilities (No.1 & No.2), each consist of a rectangular stone coffin surrounded by a rectangular stone compartment.

A Sketch of MITSUJŌ TUMULI (MITSUJŌ PARK)



MITSUJŌ No.2 TUMULUS

This tumulus dates back to the early part of the fifth century A.D. It is a circular mound about 25 meters wide and about 3.5 to 5 meters high. This tumulus has paved stones along the slope of the mound, but has no haniwa.

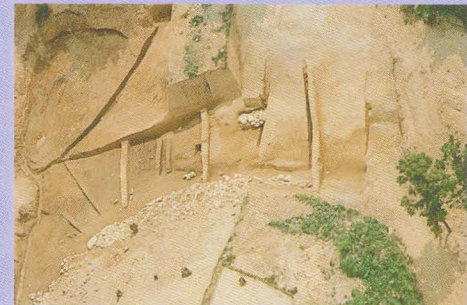
A rectangular stone coffin is situated to the north of the mound. This tumulus was built before the MITSUJŌ No.1 TUMULUS.



Aerial photography of No.2 & tumulus (1990)

MITSUJŌ No.3 TUMULUS

This tumulus is an oval mound 4 to 8 meters in width and 1 meter high. It dates back to the first half of the sixth century.



Aerial photography of No.2 & No.3 tumulus (1990)

MITSUJŌ No.3 TUMULUS - Facility for the body

This facility has a rectangular stone coffin about 1.5 meters tall and 0.2 to 0.5 meters wide. No items were discovered inside this coffin.



Facility of No.3 tumulus

Remains			
No.1 facility	No.2 facility	No.3 facility	
skeleton	1	skeleton	1
beads	18	beads	4
bronze mirror	1	bronze breslet	1
iron sword	2	iron sword	1
		iron knife	2
		comb	4
		metal rod	1
		beads	5
		iron dagger	2
		iron spearhead	1
		iron arrowheads	80